

Easy gated impulse frequency measurements using ARTA

Charlie Laub / January 2011

If you have a computer, a calibrated microphone, and a soundcard or I/O interface card you can make very accurate frequency response measurements on your loudspeaker. In the following pages, setup and measurements procedures using the free version of ARTA are described. ARTA is a loudspeaker measurement program available at: <http://www.fesb.hr/~mateljjan/arta/index.htm>

ARTA is a collection of programs for audio measurements developed by Ivo Mateljjan of the Electroacoustic Laboratory in Split, Croatia. ARTA is used for frequency response measurements, LIMP, for impedance measurements, and STEPS, for distortion measurements using stepped sine excitation.

ARTA simultaneously generates a signal that is output from the computer to the amplifier driving the speaker under test and captures the response of the speaker observed by the microphone. After some processing of the mic's response in ARTA, a very high quality measurement is obtained that is independent of the room response. The ability to make in-home quasi-anechoic measurements on a loudspeaker for less than \$200 in hardware brings powerful measurement capabilities to the DIY speaker builder that did not exist 5-10 years ago.

SETUP AND HARDWARE:

In order to perform the gated impulse measurement, you will need to elevate the speaker off of the floor and place it away from the ceiling and walls. The greater the distance to a reflecting boundary, the better. The orientation of the speaker (e.g. on it's side or standing up) does not matter as long as it is away from boundaries.

I use a Dayton Audio TSS100K tripod speaker stand to elevate the speaker under test:

<http://www.parts-express.com/pe/showdetl.cfm?Partnumber=245-010>

In order to make a non-marring platform for the speaker, I screwed a couple of scrap pieces of wood to the speaker mounting plate that comes with the stand.

It's also essential to have a microphone stand. I use a round base stand with an arm, sold by Parts-Express:

<http://www.parts-express.com/pe/showdetl.cfm?Partnumber=242-045>

A calibrated microphone is essential - do not waste your money on one that is not calibrated! I recommend buying a Behringer ECM8000 with basic calibration from Cross Spectrum Labs in Springfield Mass:

http://cross-spectrum.com/measurement/calibrated_behringer.html

Another good option is the Dayton Audio EMM-6, sold by Parts-Express:

<http://www.parts-express.com/pe/showdetl.cfm?Partnumber=390-801&FTR=emm-6>

In my opinion, Cross Spectrum Labs provides accurate calibration and at lower frequencies than the EMM-6, but that doesn't really matter unless you are trying to measure a subwoofer. For measurements over 100Hz, the EMM-6 with calibration works well.

You will need to get the microphone's voltage output in to your computer. Both of the mics above require phantom power, however other types may not. The mic output needs to be able to be put in to digital form, so that requires a "sound card". Additionally, ARTA needs to output the impulse signal to the speaker, so the computer must have the capability to output line level signals as well. You connect the output to the amp that is driving the speaker. Most speaker junkies have this kind of hardware available to them, so I will not get in to it here. Other DIY hobbyists posting on forums such as [Part-Express's Tech Talk](#) can give helpful advice about hardware and other parts of the measurement chain. Ebay is a good resource for used soundcards, etc.

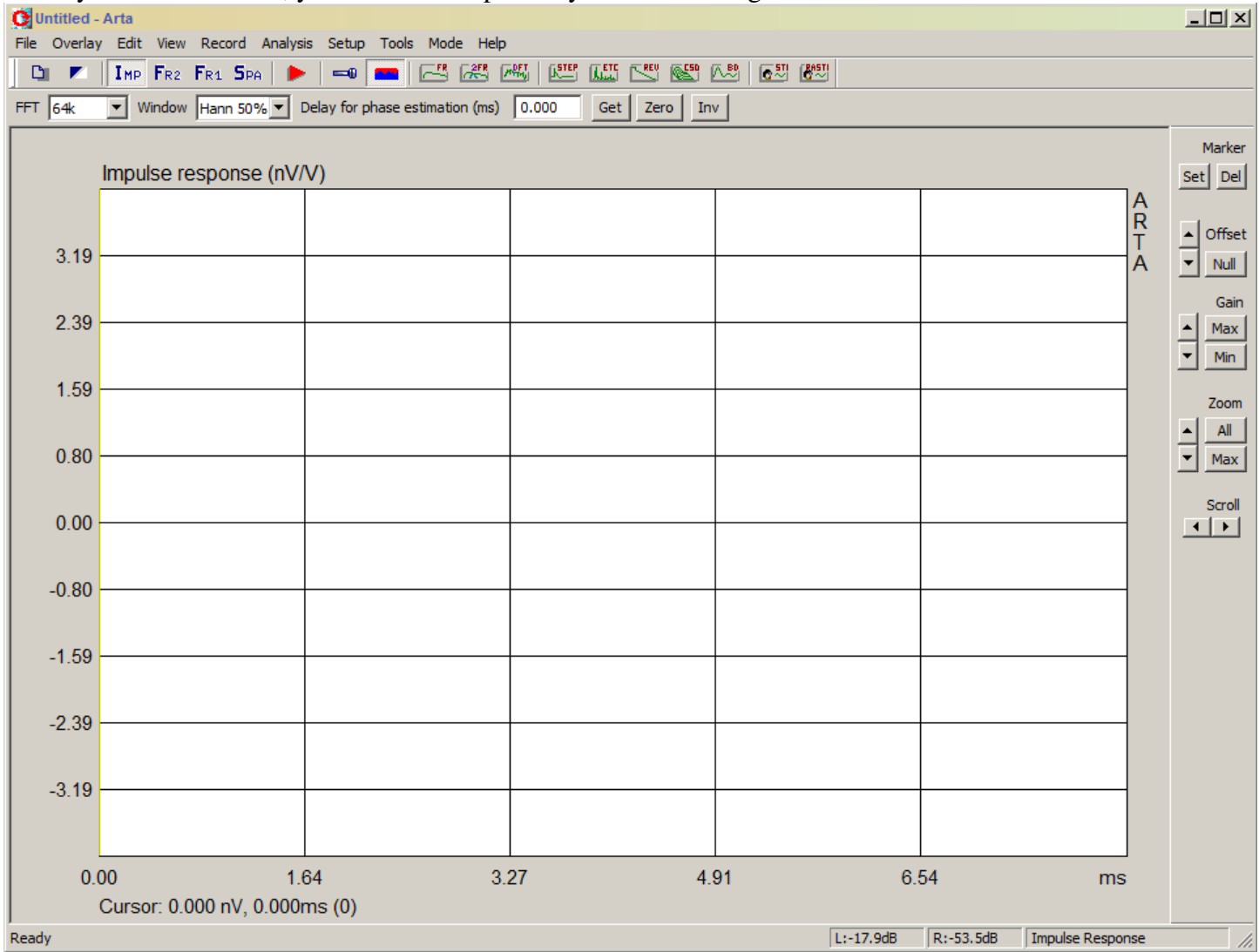
In-room measurement set up, using equipment described above:



This is a small room (10' x 12') with a 7' ceiling. In a larger room I would position the speaker near the middle of the room and farther above the floor if the ceiling is higher. The mic is on axis, about 30 inches away from the speaker. This is about as close as I would position it, since you want to be away from the near-field.

I will now step through the basic procedure for making a gated impulse frequency response measurement using a swept sine stimulus in ARTA. Sound complicated? Don't worry, it's easy.

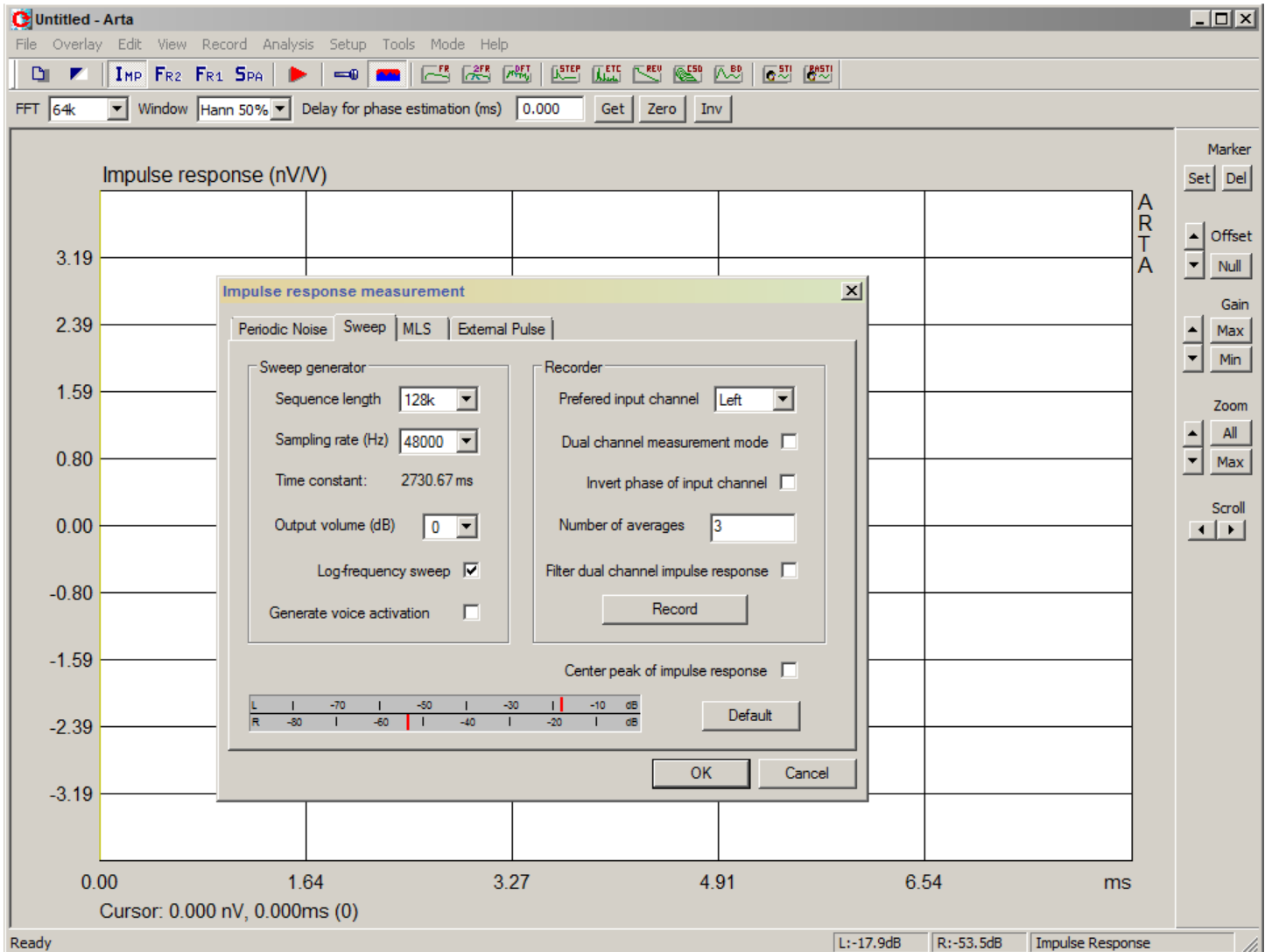
When you launch ARTA, your screen will probably look something like this:



We start by making an impulse measurement. At the top the IMP toggle button has been selected to indicate that an impulse measurement will be made.

The impulse measurement is set up by clicking on the red “play” button (shown under the Analysis menu). Clicking the button will open a dialog box for setting up various measurement parameters, which is shown in the next screen shot:

We will do a swept sine impulse measurement. Select the “Sweep” tab from the dialog box as shown:

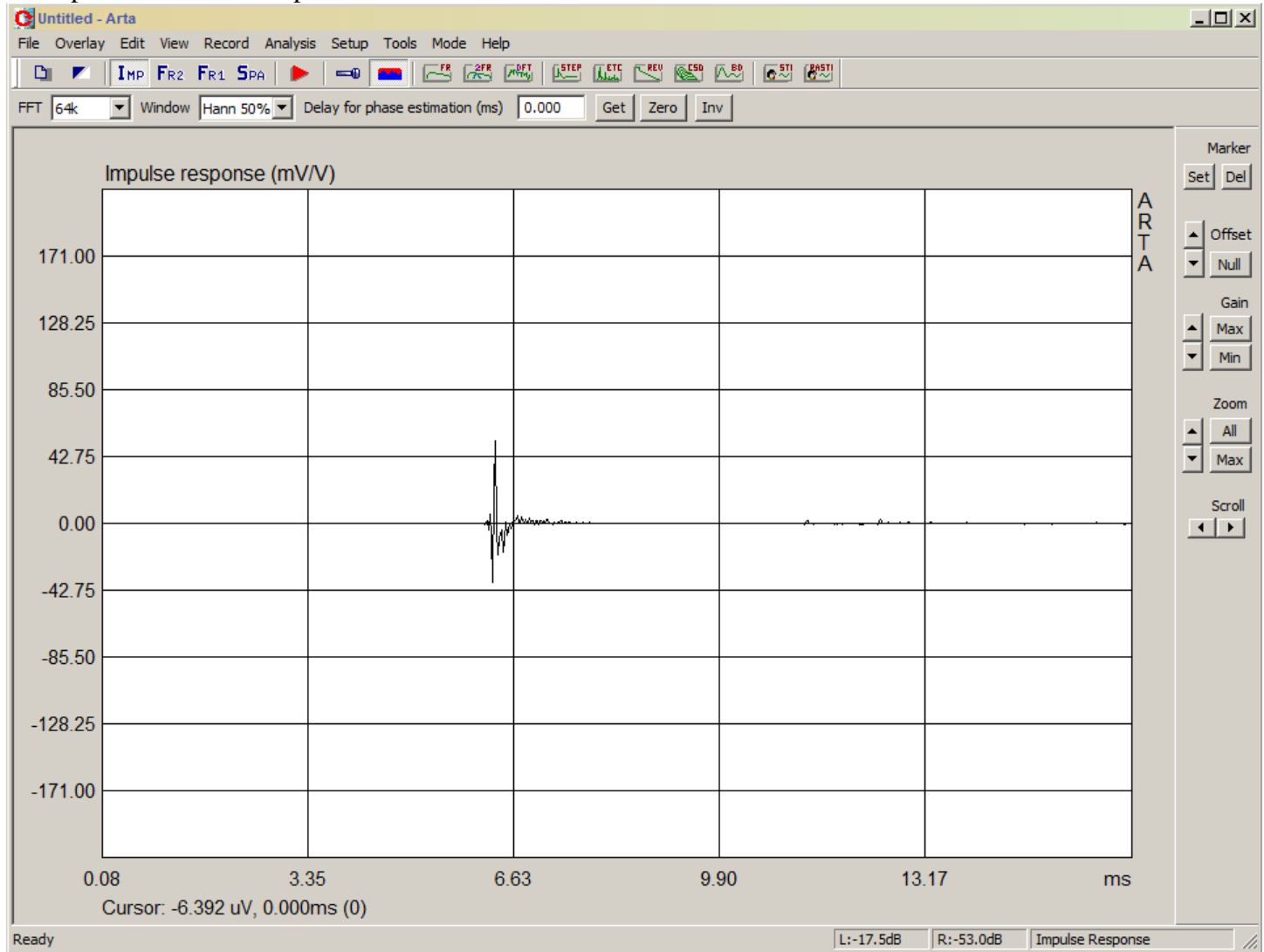


Enter the parameters shown. Other can work too. It is useful to use 3 or more cycle of the stimulus to reduce noise. Longer sequence lengths only serve to increase the accuracy of low frequency measurements, so 64k would be fine. The highest frequency that can be measured is one-half the sampling rate. The maximum value that appears may depend on your soundcard’s sampling rate capabilities.

To begin the measurement, click on the Record button. This will run through the selected number of cycles of the stimulus signal and then stop. To accept the result, click OK.

If you have successfully measured something, the ARTA impulse response window will now look something like the following:

Example of successful impulse measurement:

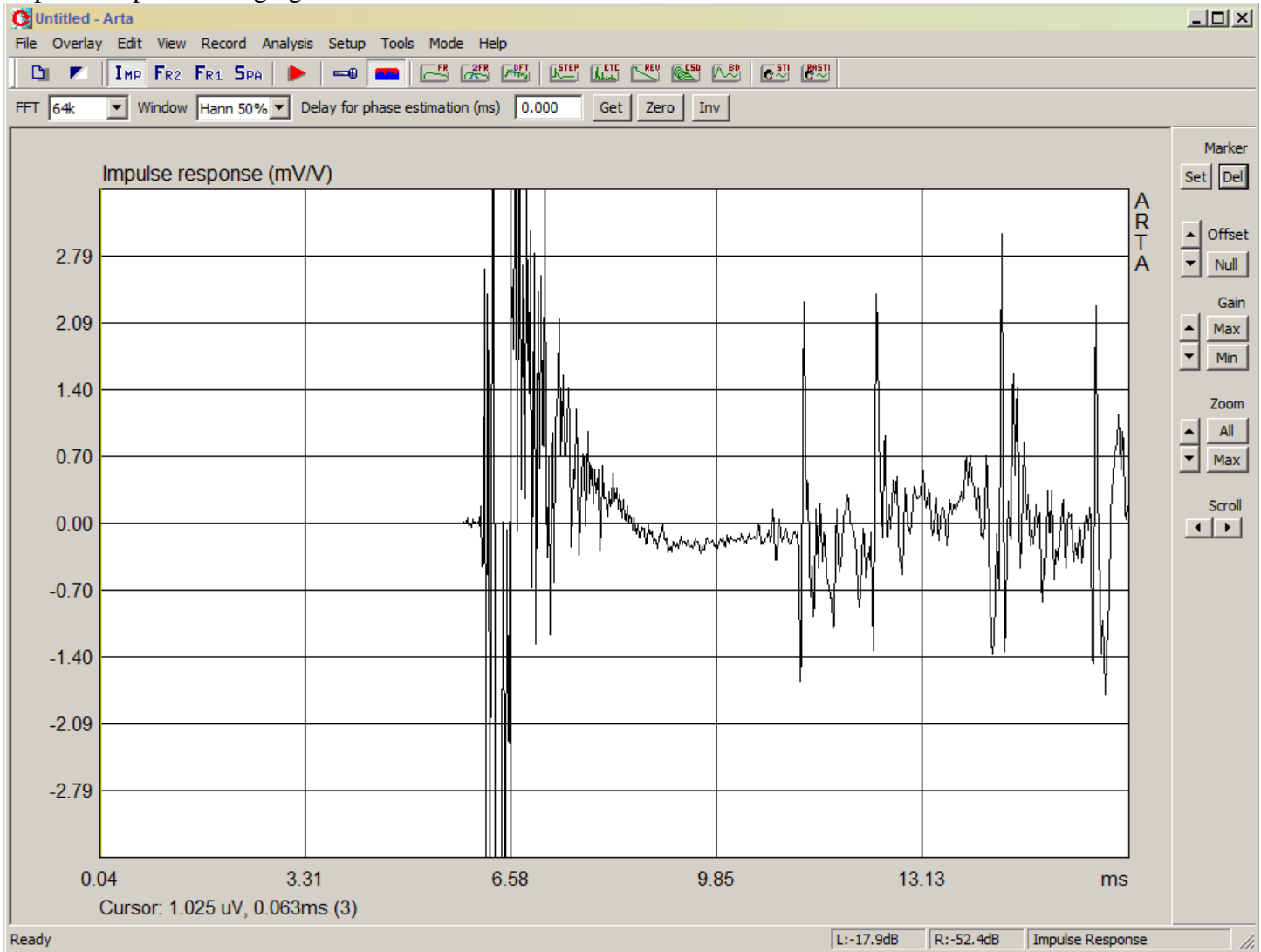


HINT: If you get what looks like broadband noise or nothing at all, it's time to sleuth out the signal chain and the settings for the output and input channels, check the level settings, etc. The first time you try this, it may take a couple of iterations to get it right. It can be helpful to go back and start over using ARTA's Spectrum Analyzer (select the SPA button at the top) since this outputs a continuous signal.

If you get something like the above screen shot, congratulations! You have taken an impulse measurement. Now you must do some processing on it to obtain the gated impulse frequency response. This involves setting starting and ending markers for the impulse. These indicate the part of the captured audio signal that comes after the first arrival of the impulse but before any subsequent reflections from nearby surfaces.

To determine where to set the markers, you will need to "blow up" the signal by increasing the gain. Use the up arrow in the group of controls just below the word "Gain" at the right side of the screen. Increase the gain until you see something that looks like the following:

Impulse response at high gain:



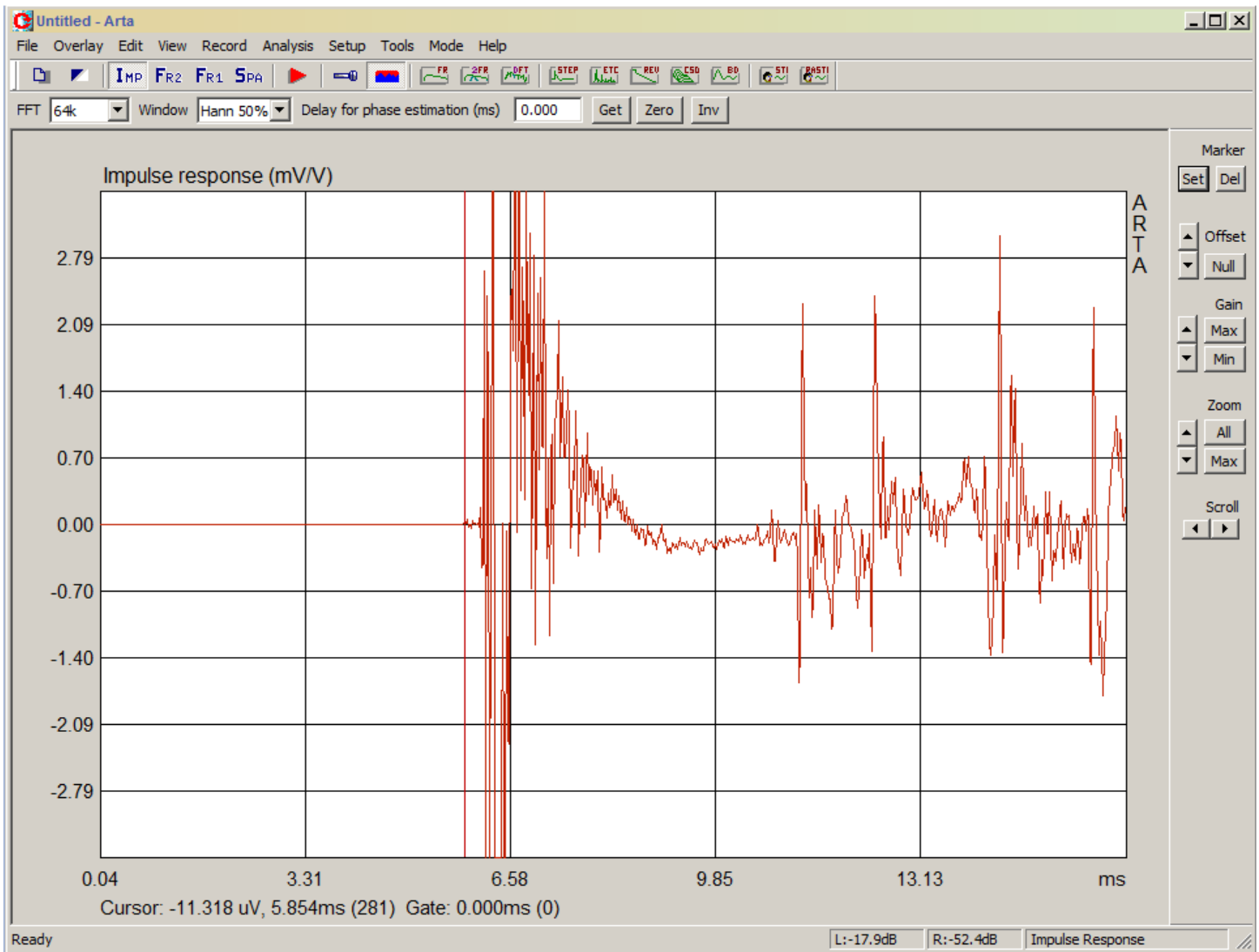
The signal above comprises the following:

1. no signal before the initial arrival of the impulse (up until about 6 mS in the screen shot above)
2. the direct sound, and decay of the impulse (between 6 and 11 mS)
3. additional echoes of the direct sound, resulting from reflections off of nearby surfaces (after 10 mS).

Two markers need to be set to tell ARTA when the first (direct) impulse starts and when the echoes begin.

The first marker should be placed at the start of the direct signal. First, click on the appropriate location with the mouse, then click the "SET" button at the top right under "Marker". You should get something like the following:

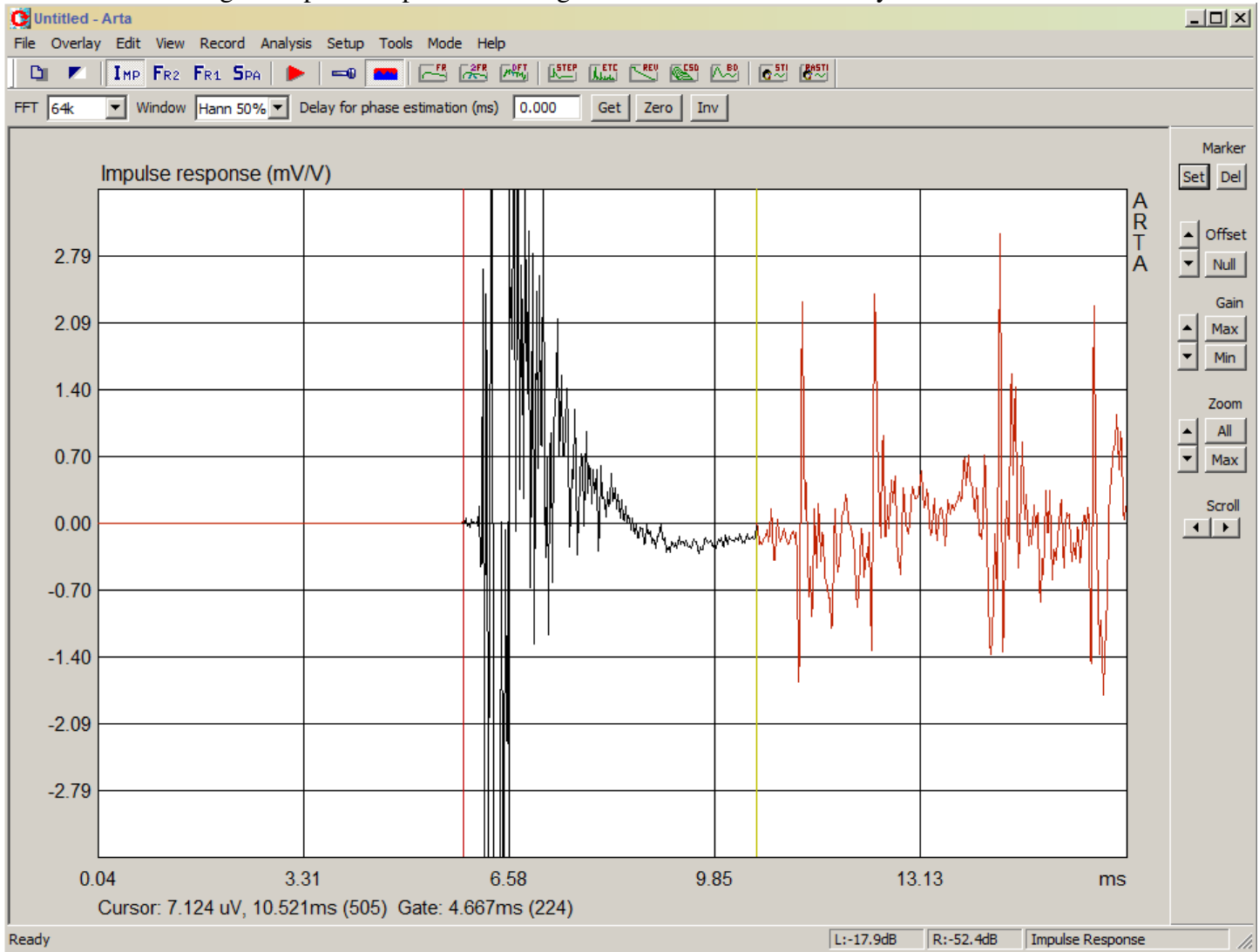
Screen shot after the first marker has been set:



Note that everything is in red. The color red indicates the part of the signal that is to be ignored. Since only one marker has been set, it's all red. We need to go ahead and set the second (end) marker.

Now set the end marker by clicking on the signal just before the first reflected sound. That's it. Now the screen should look something like this:

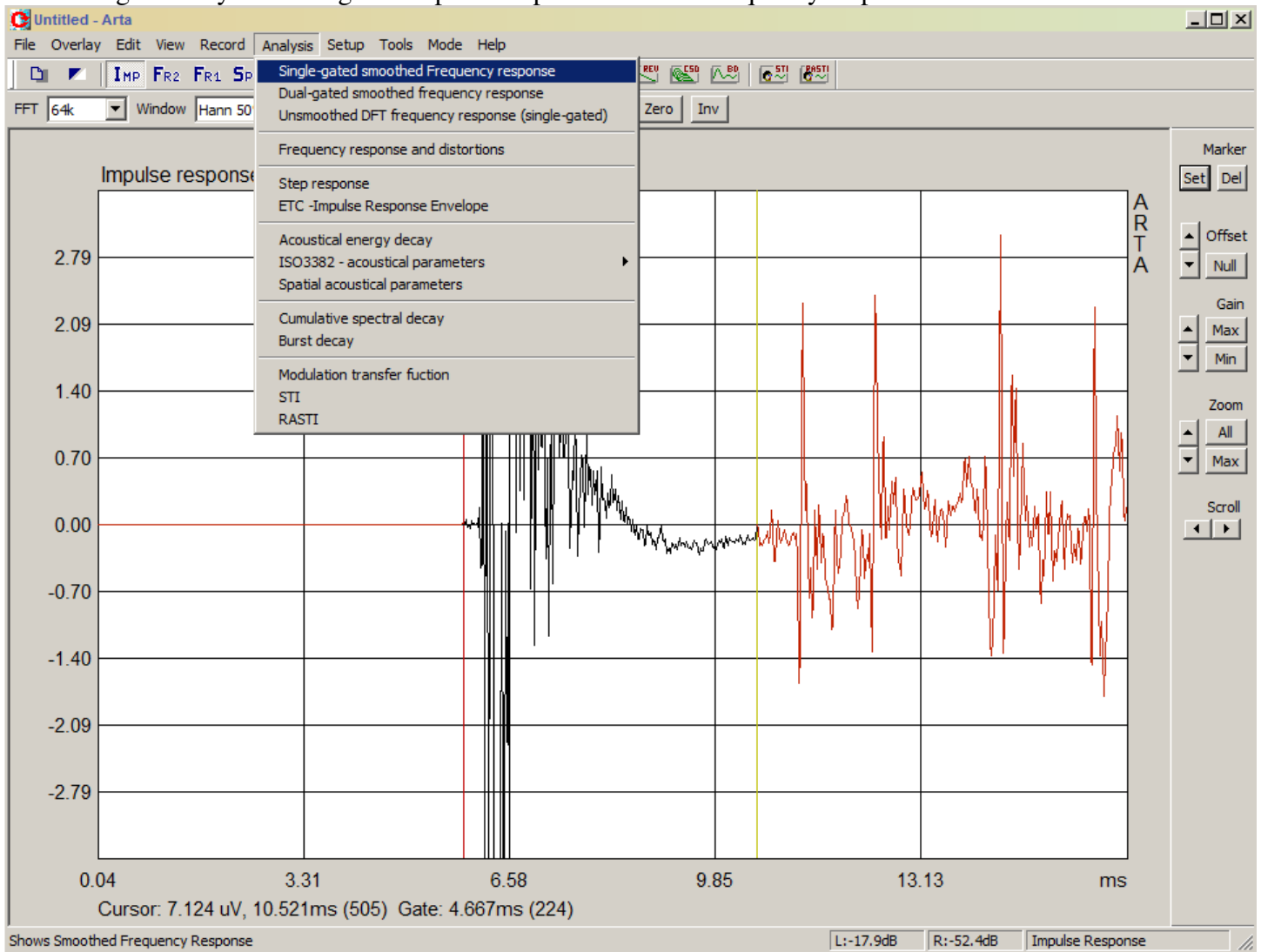
Screen shot showing an impulse response with begin and end markers correctly set:



Now the portion of the signal between the markers has changed color, to black, and everything outside of the markers is still red and will be ignored.

With the markers set, ARTA can be directed to process the data in to a frequency response. Use the menu command as shown in the next image:

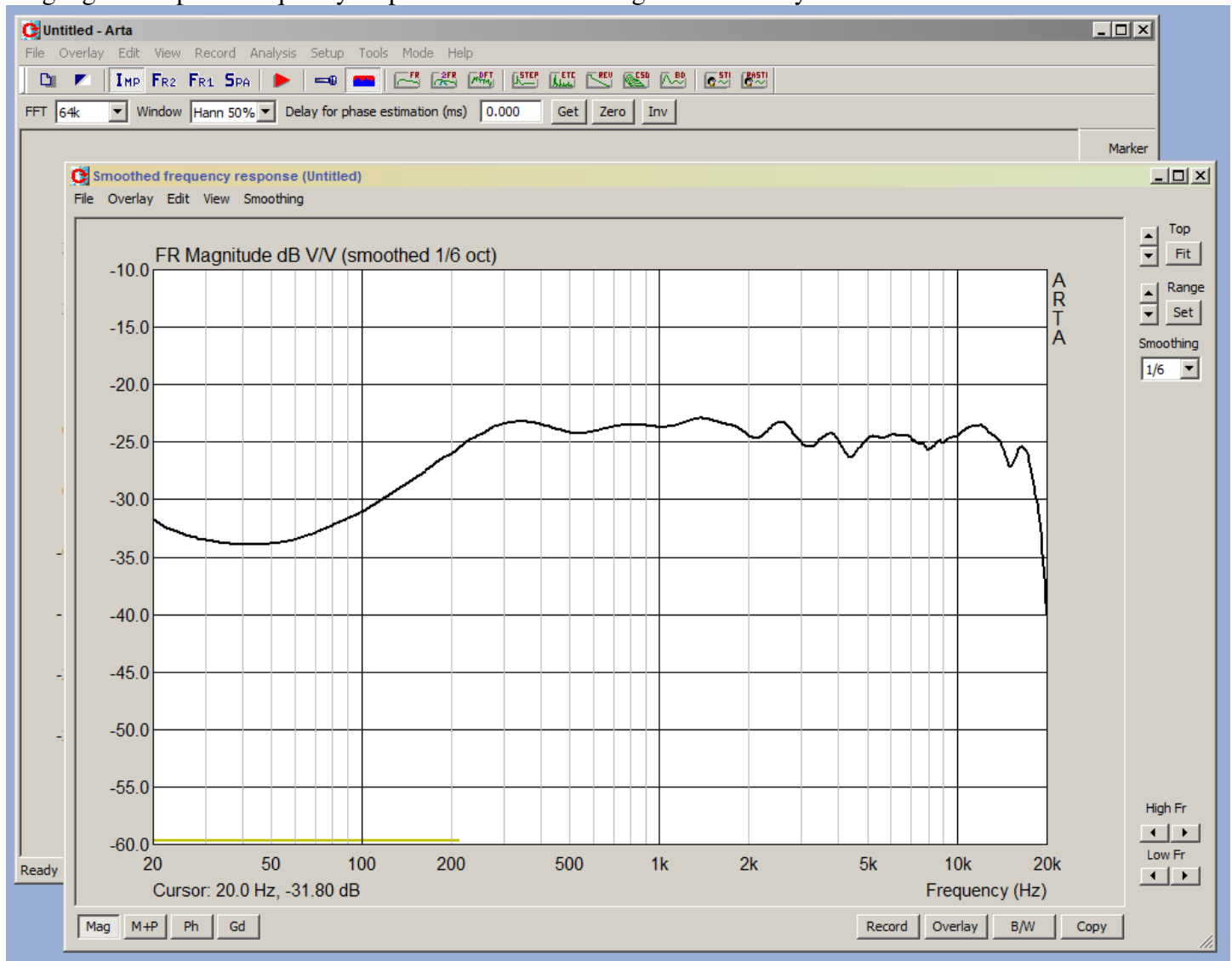
Performing an analysis of the gated impulse response to obtain frequency response:



When you click on the menu item as shown above, ARTA will calculate the frequency response using the part of the impulse response that you selected (in black above). A new window will open, showing the frequency response. The next page shown an example on the small speaker that I measured as part of this tutorial.

Note that if you have calibration for your microphone, you can upload it to ARTA using the menu command "FR Compensation" in the "Setup" menu. You should do this before calculating the frequency response.

Single gated impulse frequency response window showing result of analysis:



Massaging the response:

The y-axis values are arbitrary, since there was no attention paid to the actual microphone output level. You can scale the level using the “Scale Level” command in the “Edit” menu (enter the number you would like to add to the existing data in the dialog box). After you scale the data, it may disappear (go off screen) but just click the “FIT” button under “Top” at the top, right of the screen and the data will come back in to view automatically. You can then play with the range to get the y-axis scale to your liking and move the response up and down using the up / down buttons next to “Top”.

Note that there is a yellow bar at the bottom extending from the left limit of the x-axis over to about 200Hz. This bar indicates a region of the result that is invalid because there was insufficient data to extract the low frequency information from the gated impulse. This is where a larger room is beneficial – by moving the speaker away from all reflecting surfaces (even the floor) you will be able to gate off a longer portion of the measured impulse response. For instance, I have a large room in my home with high ceilings. I can place the speaker on top of a 6 for step ladder and get the response to be valid down to about 100 Hz. This is about the lowest practical limit however. Below this you must do a near field measurement on the woofer alone and splice the two measurements together. See the ARTA manual for more information on this.