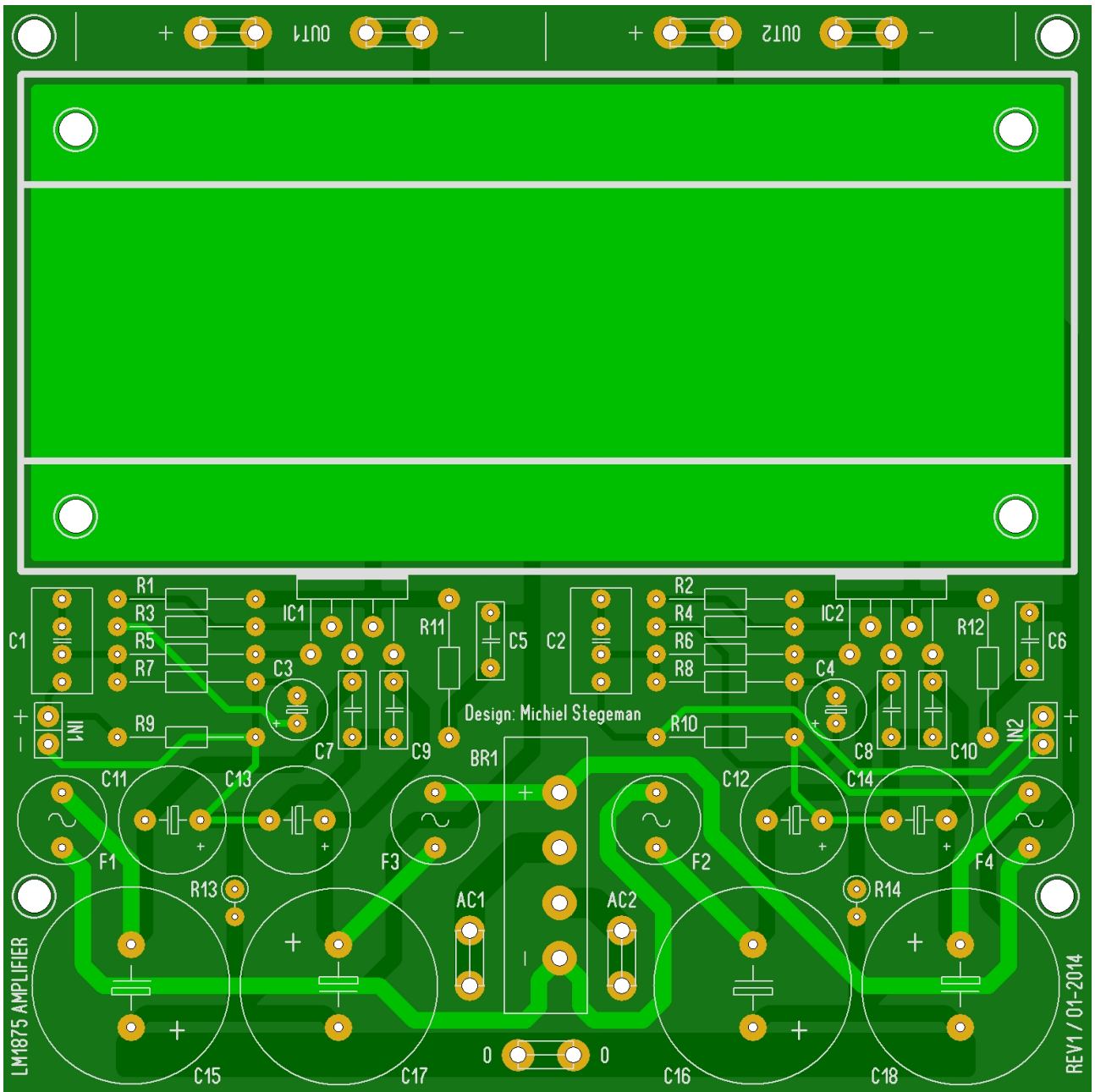


LM1875 stereo amplifier



Design: Michiel Stegeman
01-2013

Parts list:

R1, R2, R7, R8	22K
R3, R4, R5, R6	1K
R9, R10	1M
R11, R12	1 / 1W
C1, C2	2u2 / 63V MKT
C3, C4	47u / 25V
C5, C6	220n / 63V MKT
C7, C8, C9, C10	100n / 63V MKT
C11, C12, C13, C14	220u / 35V
C15, C16, C17, C18	4700u / 35V
IC1, IC2	LM1875
F1, F2, F3, F4	Fuse T-2A / 5mm pitch
BR1	Bridge rectifier >6A / 5mm pitch
Input connector	2-pins / 2,5mm pitch header (2x)
Power and speaker connector	6.3mm Faston (7x)
Heatsink	SK-68-100
2x M2.5 bolts for mounting LM1875 ICs	
2x isolation kit for TO-220 IC	
Transformer	15V-0-15V / 100VA