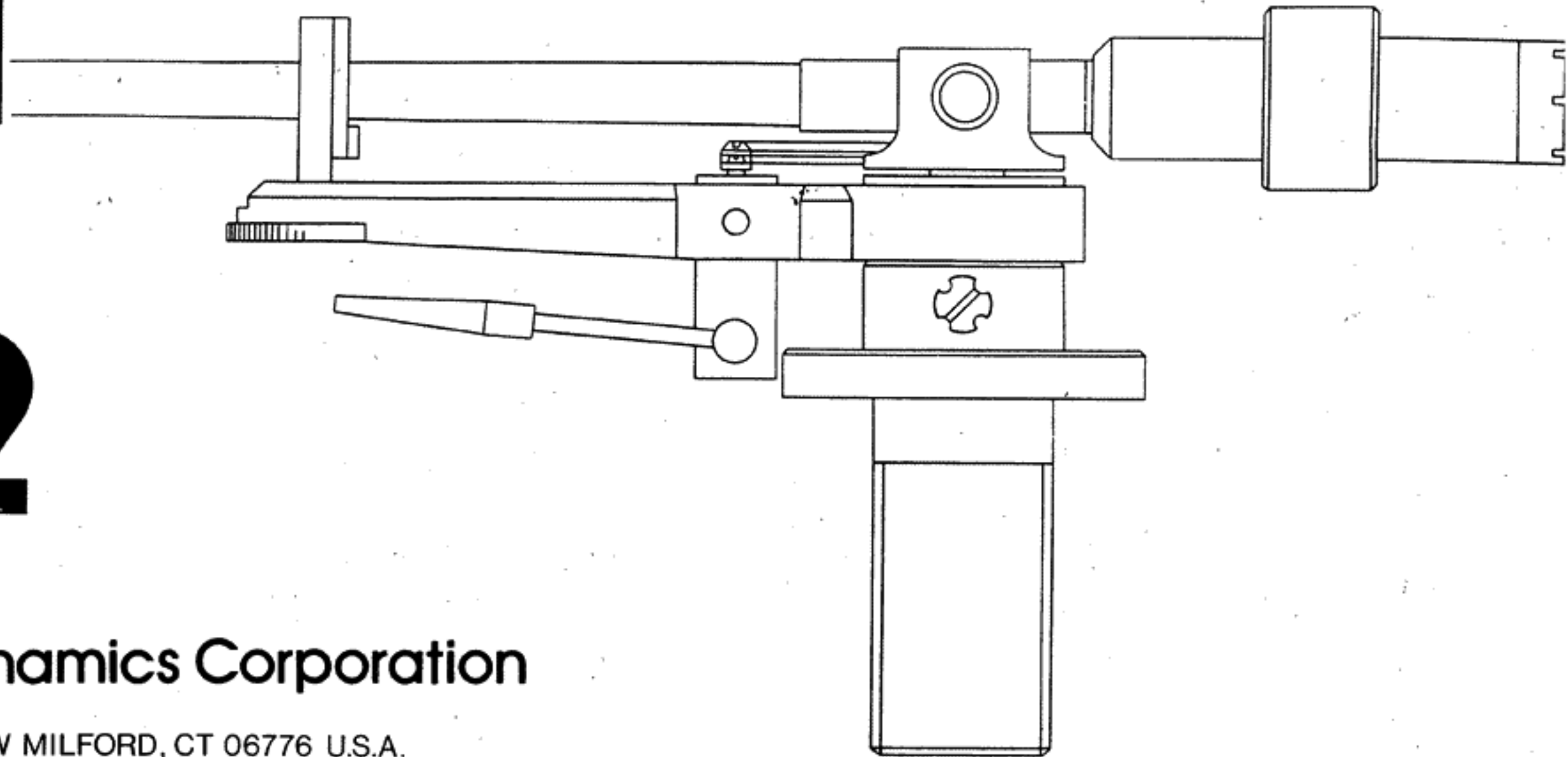


The home of the turntable

THE VINYL ENGINE®

For more turntable manuals and setup information
please visit www.vinylengine.com

LMF-1



LMF-2



Audio Dynamics Corporation

PICKETT DISTRICT ROAD, NEW MILFORD, CT 06776 U.S.A.

FIGURE 1

1. Locating the tonearm position on your turntable.

Place the template hole 'A.' over the spindle of your turntable, see figure 1. Rotate the template until side 'C'. is parallel to your turntable edge as shown. The round edge 'R'. should, at this time, be within your turntable cover limits. If it is not, move the template until the curved edge is just within the turntable cover. With the template held in this position, mark center of hole 'B'. as the location for drilling to mount your tonearm.

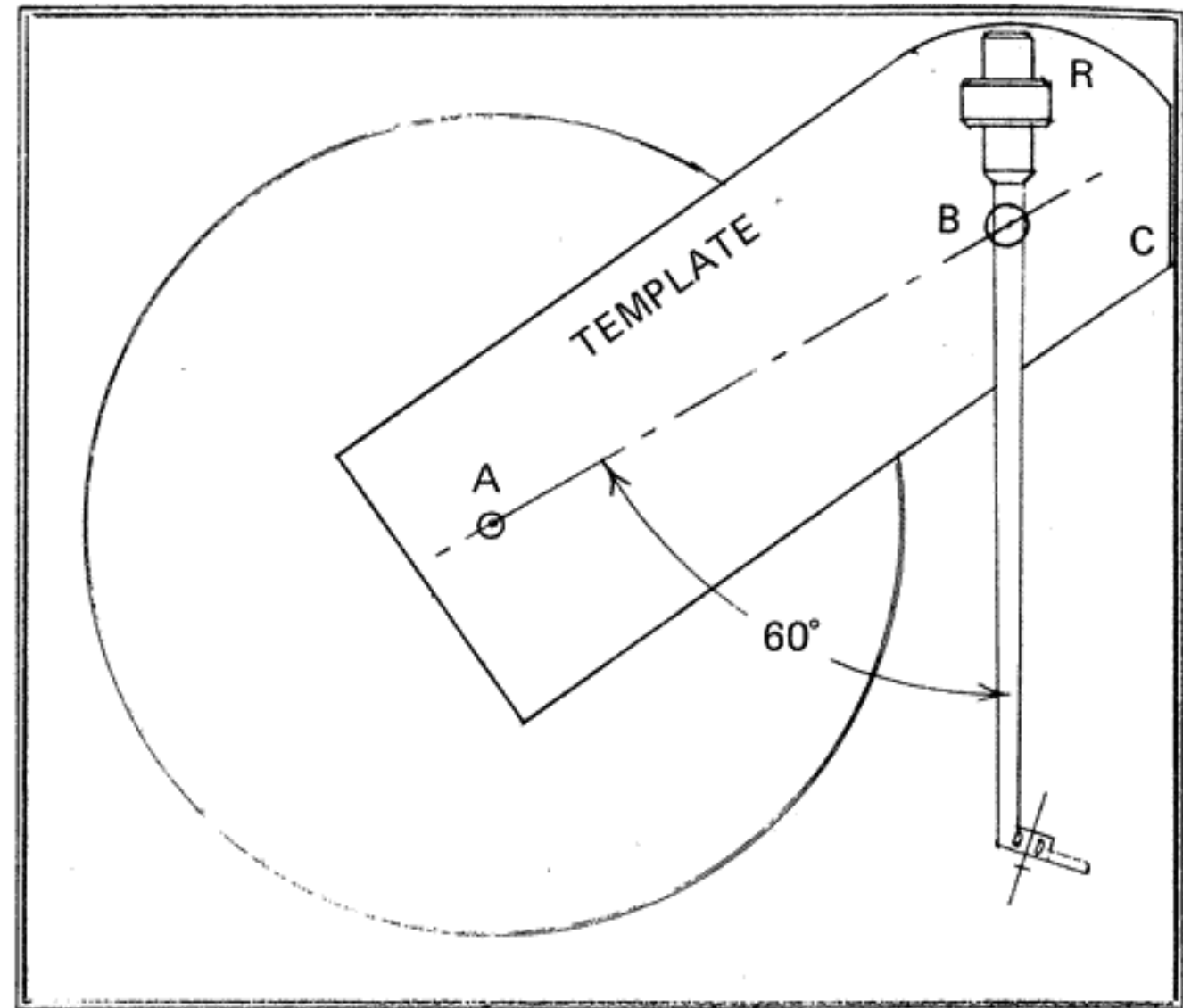
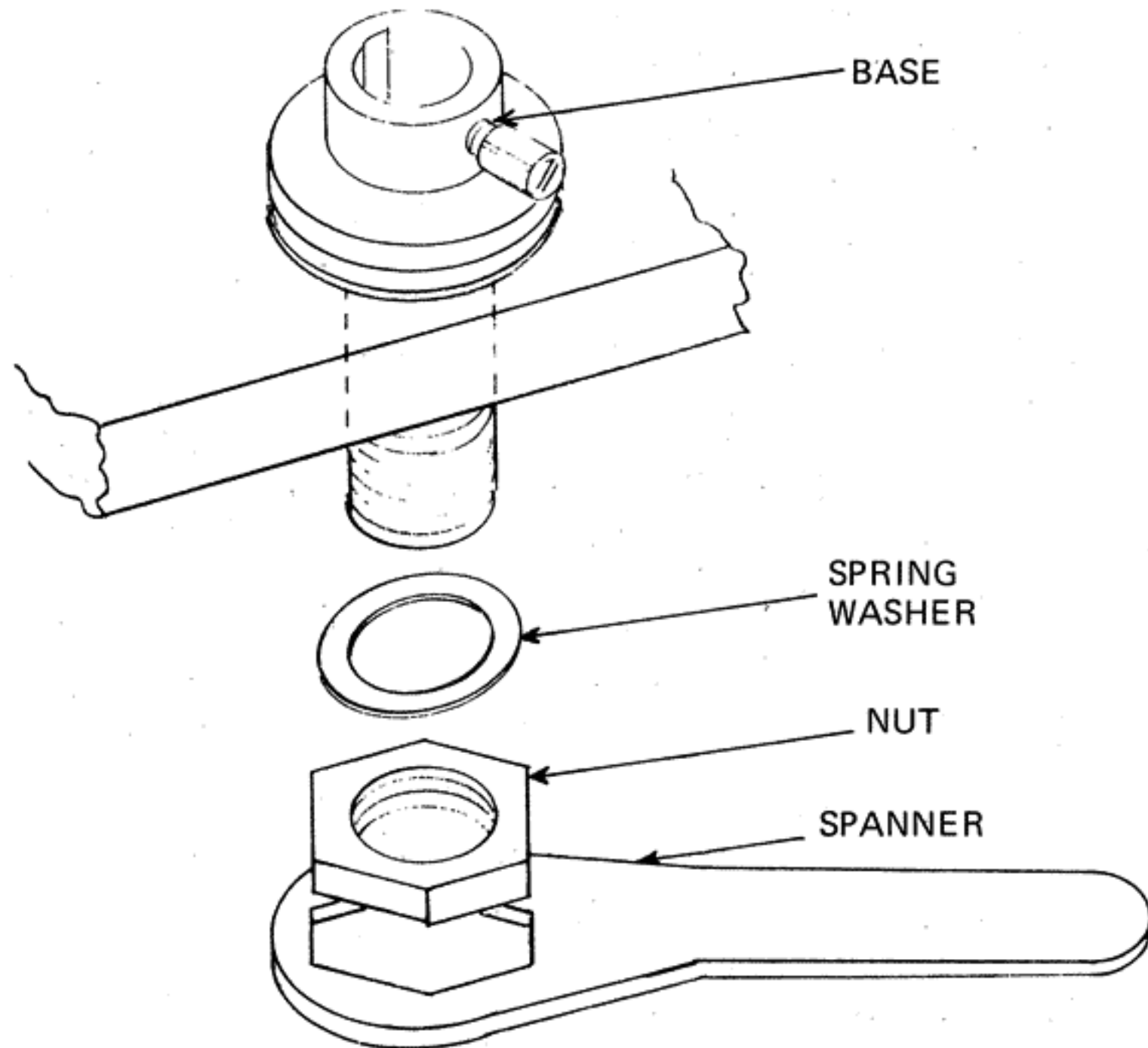


FIGURE 2

2. Mounting your tonearm.

Make a one inch (25mm.) hole at the exact location of template hole 'B'. per the instructions of paragraph 1. Attach the base with the arrangement of parts shown in figure 2. Very lightly, tighten the nut.



Mounting your tonearm, cont'd.

See figure 3. Insert the arm shaft through the hole 'B' of the template and then into the base, which you have mounted, aligning the groove of the arm shaft and the set screw of the base. Move the base in its mounting hole until the template hole 'A' fits the spindle as shown in figure 3. With the tonearm held in the arm rest position, rotate the base in its mounting hole so that the arm direction aligns with the 60° line shown on the template. This will assure best operation of the cueing lift. With the arm in this position, tighten the base mounting nut firmly, see figure 2., with the spanner (wrench) supplied.

TURNTABLE
SPINDLE

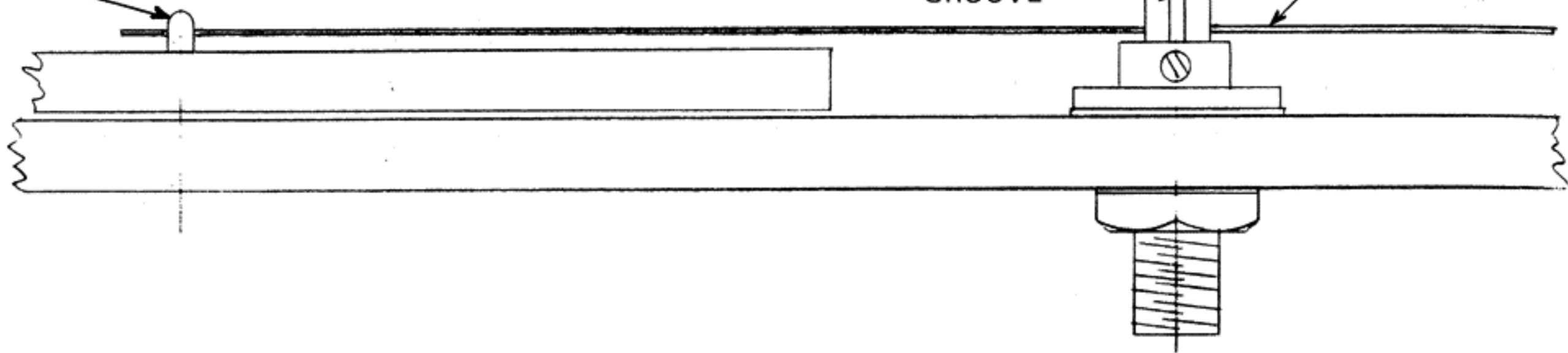


FIGURE 3

TONEARM SHAFT
TEMPLATE
GROOVE

3. How to mount your cartridge.

Hold the cartridge with its stylus tip in a position three-eighths inch (10mm.) away from the center of the indicator lines of the shell, see figure 4. Tighten the screws to secure the cartridge in this position. Be sure each screw is tightened on the same corresponding line. Connect the lead wire terminal clips to the terminals of the cartridge with colors corresponding as follows:

LS	White	LG	Blue
RS	Red	RG	Green

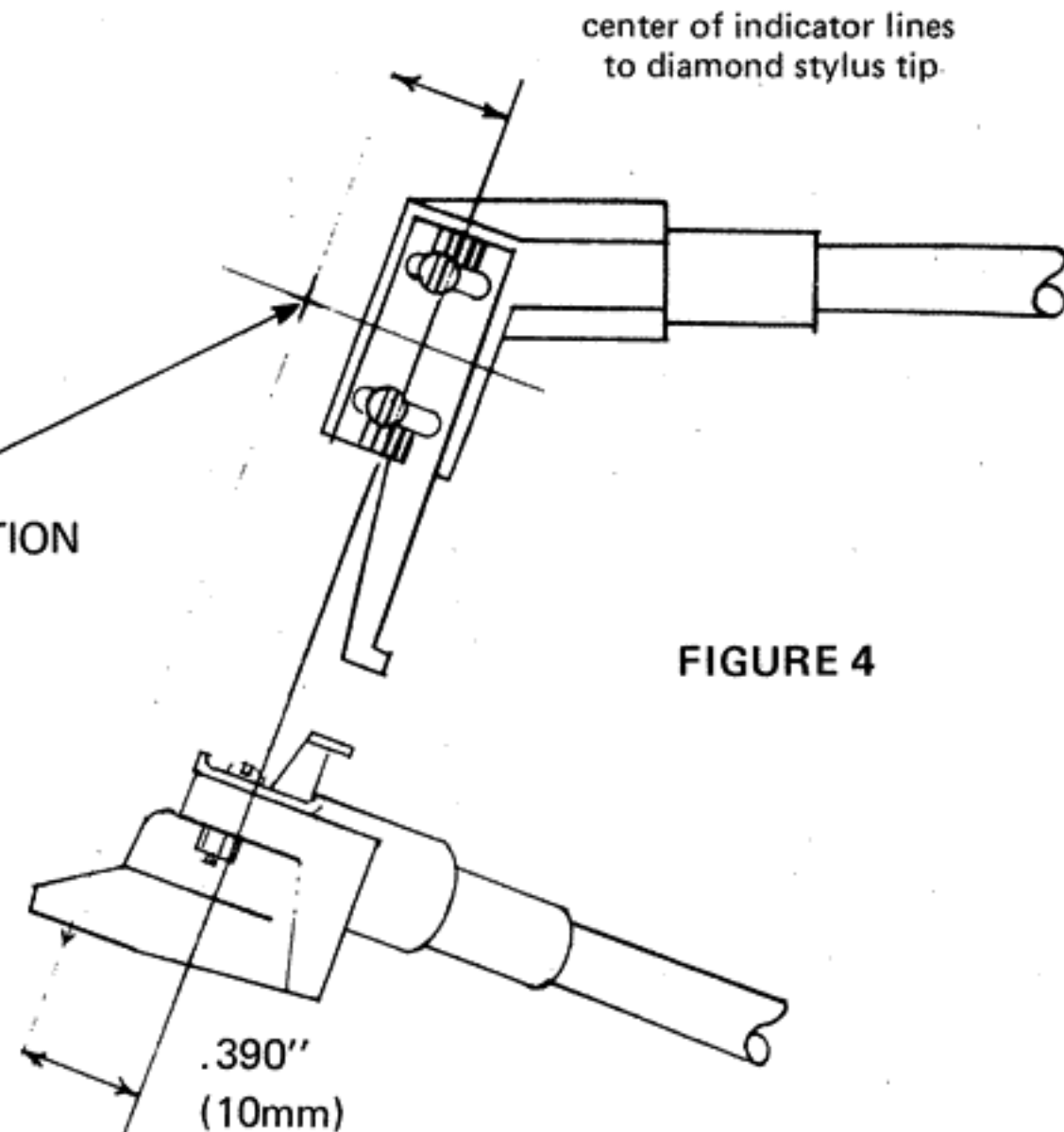
4. How to mount the removable head of model LMF-2.

Attach the cartridge in the same manner as in 3.

Insert the head with mounted cartridge into the tip of the arm, aligning the head groove with the lock screw. Loosen the lock screw slightly if required. With the head inserted all the way, carefully tighten the lock screw securely, but not too much.

For your convenience, the template has been printed with an overhang arc, which should correspond with the stylus tip position if no error has occurred.

STYLUS TIP POSITION



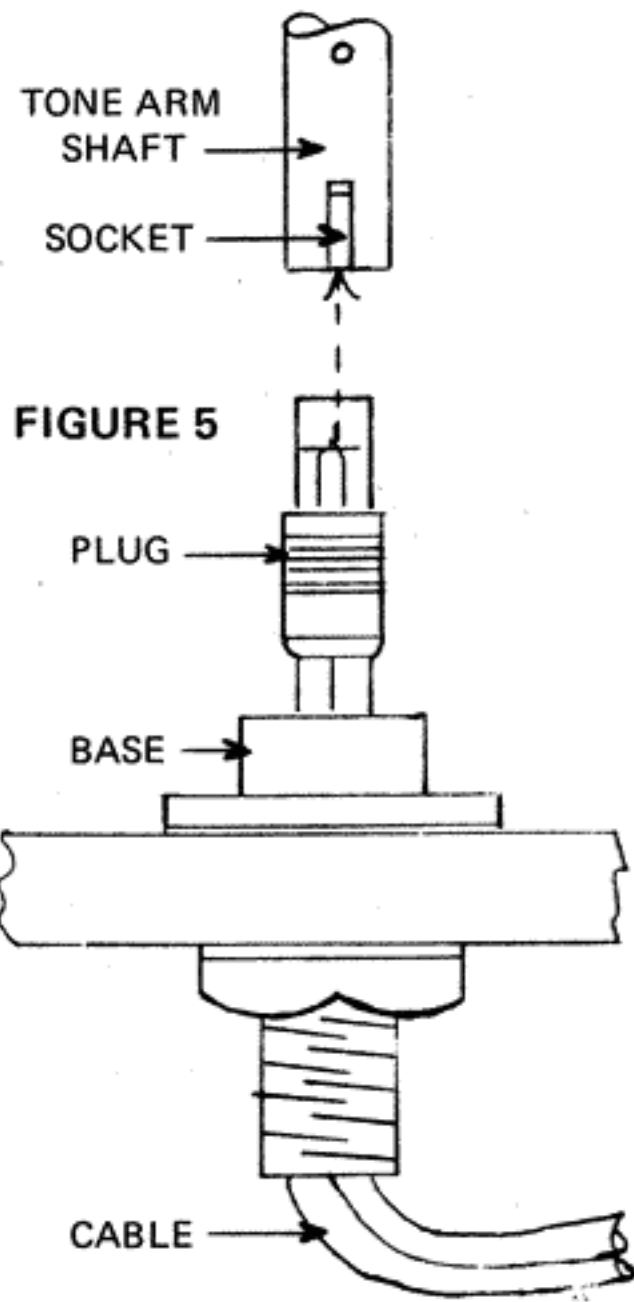


FIGURE 5

5. How to connect output cord.

At this time, loosen the set screw of the tonearm shaft, raise the tonearm shaft out of the base, and remove the template.

Put the output cord through the tonearm base hole, see figure 5, align the plug key with the socket slot and press it home. Reinsert the arm shaft with the output cord connected into the base, aligning the groove with the set screw and lightly tighten the set screw.

6. Adjustment of arm height.

Adjust the arm height by raising or lowering the tonearm shaft in its base until the arm is visually parallel with the stylus tip resting on a record, see figure 6. Tighten the tonearm base set screw to secure the arm at this height.

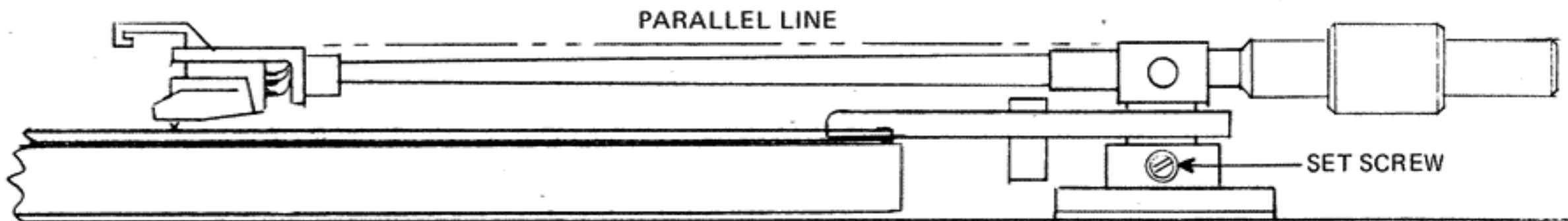


FIGURE 6

7. Balance adjustment and stylus force adjustment.

Turn the anti-skating dial to OFF as shown in figure 7.

Be sure the stylus guard is removed from the cartridge while making your stylus force balance adjustments.

Set the stylus force adjusting knob to "0" gr.

There are three kinds of balance counterweights, meeting the following cartridge weights. Select one for your cartridge. Carefully slide it onto the rear of the tone arm.

Counterweights	LMF-1 Integrated Head Model	LMF-2 Detachable Head Model
LOW	4g - 4.7g.	3g - 4.4g
MEDIUM	4.7g - 6.7g.	4.3g - 7.5g
HEAVY	6.5g - 10.0g	6g - 11g

Move the balance counterweight back and forth lightly until the arm is balanced with your stylus tip just off the record surface.

Adjust your desired stylus force by turning the stylus force adjusting knob as shown in figure 6. There are "click" stops each $\frac{1}{2}$ gram, up to $1\frac{1}{2}$ grams. There are dial graduations at each 0.1 grams.

ANTI SKATE ADJUSTMENT

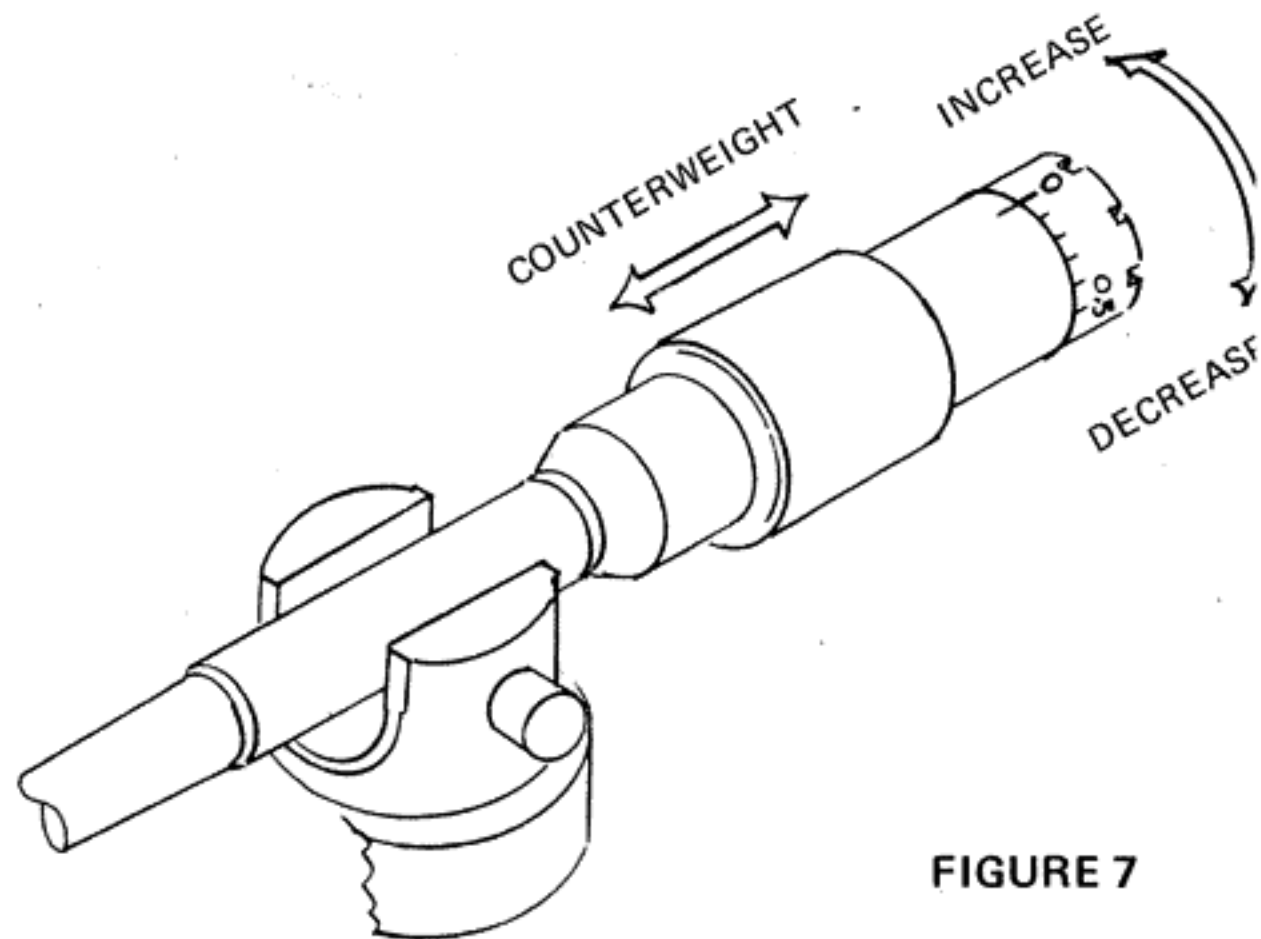
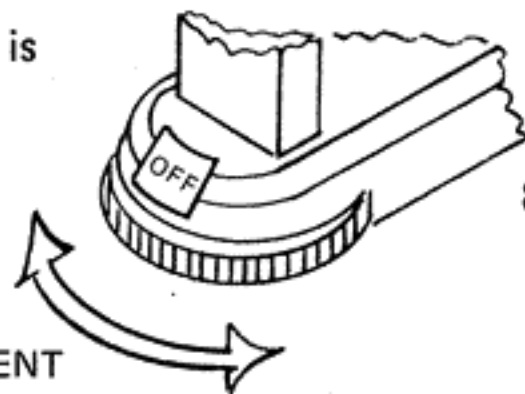


FIGURE 7

8. Adjustment of anti-skating.

The most suitable value is obtained when the indication of the anti-skating dial is matched to the stylus force value.

