

NO. REVISIONS

DATE

TITLE:-

ASSY. OF BASS CHAMBER ~ 801

B & W LOUIDSPEAKERS LTD. WORTHING, ENGLAND.

DRG. NO. A 906

DRAWN T.C.R. CHECKED SCALE 1:5 DATE OCT. 81

COPYRIGHT

FOR FULL LIST OF PARTS
REFER TO COMPUTER.

THREE PIN PLUG
BULGIN P 429

GASKET
DRG. No. A 710 B

PLAIN WASHER
6mm. 1/DIA.

TWIN FAST SCR.
POZI-PAN
No. 3 x 1 1/2" LG.

TERMINAL
TRAY. DRG. No.
BB 58 C

ALL DIMENSIONS IN MILLIMETRES

MINICASTOR (PEG & SOCKET FITTING.)
A. KENRICK & SONS. LTD.,

HEAD ASSY.
DRG. No. A 907

TOP COVER
PENT. DRG. No.
C 769 06-7 D

FOAM PAD
DRG. No. C 687 F

MOUNTING PLATE
DRG. No. AB 26 A

POZI-PAN SCR. M6 x 30 LG.

CROSSOVER ASSY.

GRILLE FRAME
PENT. DRG. No.
769.06-5B

801 BASS
DRIVER.

FIBRE WASHER
6mm. 1/DIA. x 16mm. 0/DIA.

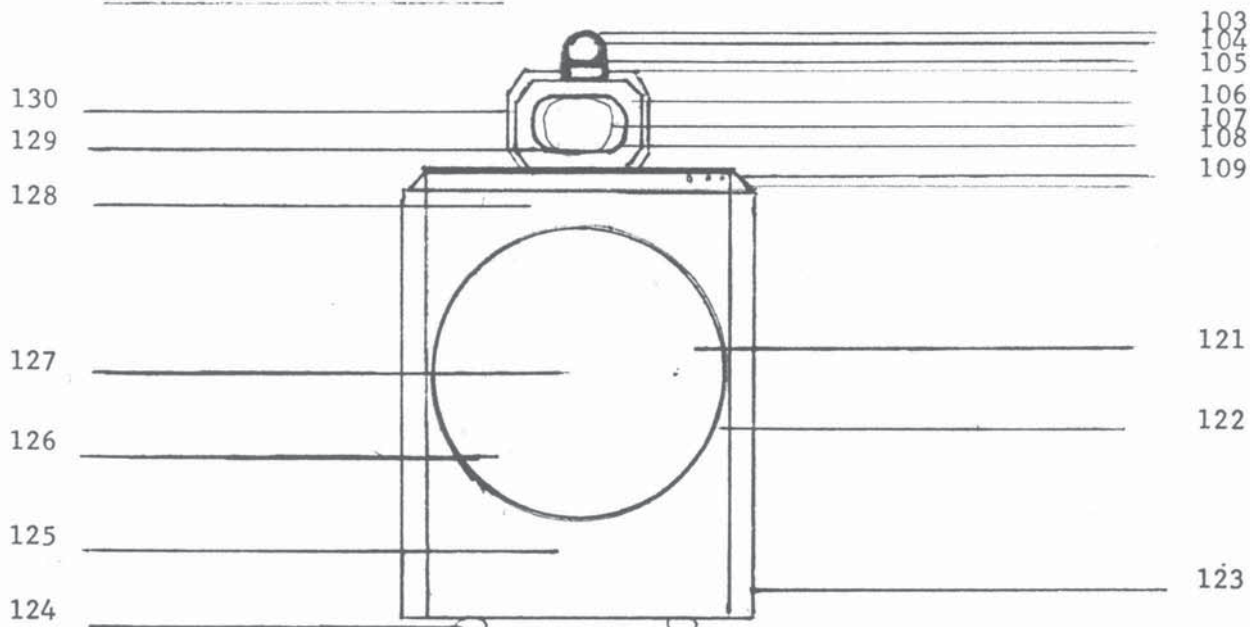
SOC. BUTTON HD. SCR.
M6 x 30 LG.

L.E.D. &
(B & W) MOTIF

CABINET AND PLINTH
DRG. No. C 904

3rd ANGLE PROJECTION
DO NOT SCALE

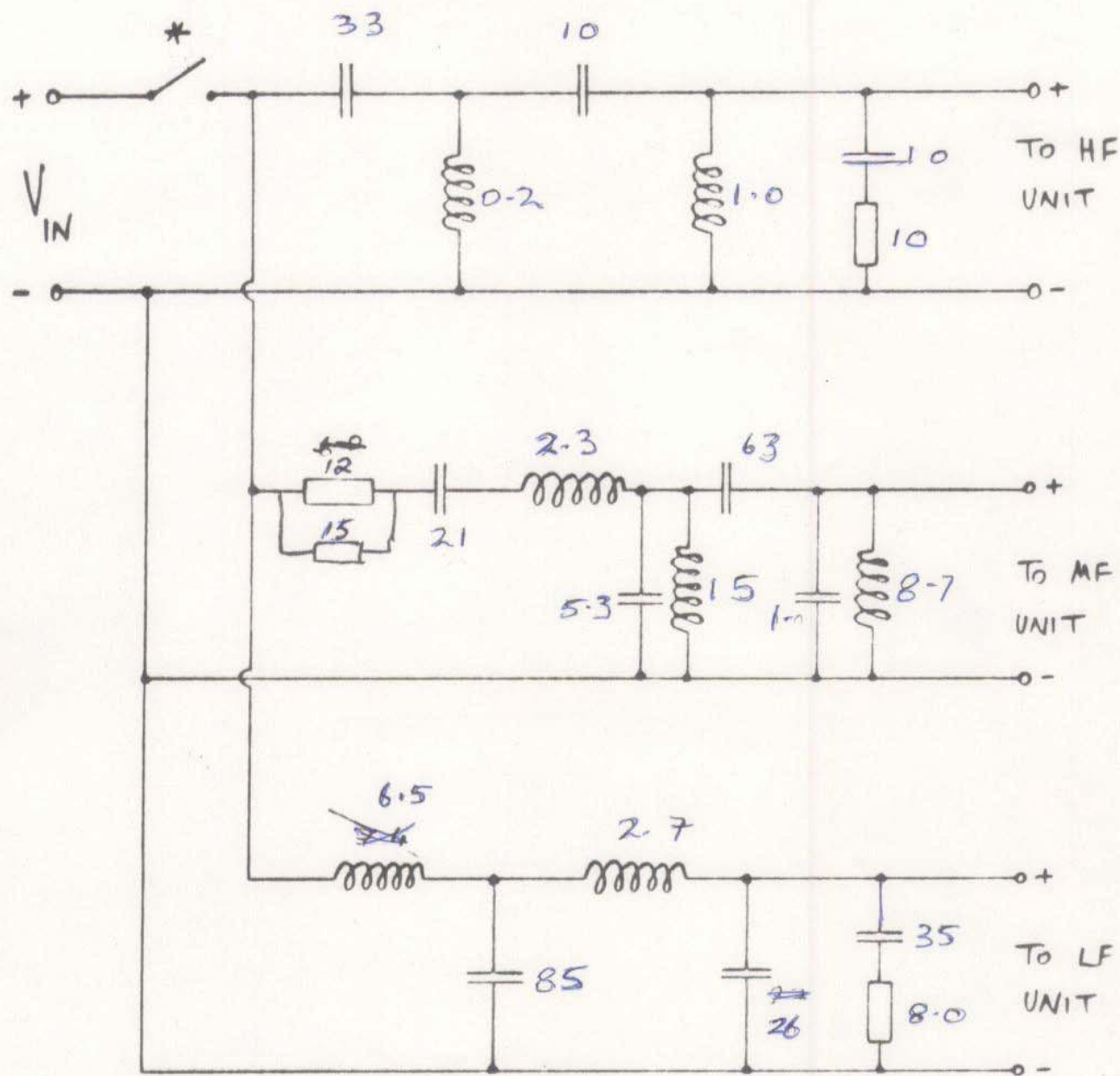
B & W 801



PART #	PART DISCRIPTION	NO. REQUIRED PER UNIT	COST	LIST
00100	BASS UNIT	1	\$125.06	\$208.85
00101	MID UNIT	1	76.27	127.37
00102	TWEETER	1	76.60	128.07
00103	CROSSOVER (OLD TYPE) BASS-HF	1	91.47	152.75
00104	CROSSOVER (OLD TYPE) MID	1	78.17	130.54
00105	CROSSOVER (NEW TYPE) WITH A.P.O.C.	1	141.83	236.86
00106	HEAD BOLT (FOR WOOD HEAD)	1	3.97	6.63
00107	HEAD BOLT (FOR FIBRECRETE HEAD)	1	3.97	6.63
00108	BASS GRILLE (BROWN)	1 FOR WALNUT OR TEAK	16.27	27.14
00109	BASS GRILLE (BLACK)	1 FOR BLK. ASH OR ROSE	16.27	27.14
00110	MIDRANGE GRILLE(BROWN)	1 FOR WALNUT OR TEAK	11.32	18.90
00111	MIDRANGE GRILLE (BLACK)	1 FOR BLK. OR TEAK	11.32	18.90
00112	BASS GRILLE GROMETS (ON BASS UNIT)	4		
00113	MID GRILLE GROMETS (ON GRILLE)	4		
00114	BASS UNIT BOLTS	4		
00115	BASS BOLT GROMETS	4		
00116	TOP GRILLE (E.P.O.C.)	1		
00117	TOP GRILLE (A.P.O.C.)	1		
00118				
00119				
00120				
00121				
00122				
00123				
00124				
00125				
00126				
00127				
00128				
00129				
00130				
00131				
00132				
00133				
00134				
00135				
00136				
00137				

MODEL 801

CROSSOVER NETWORK

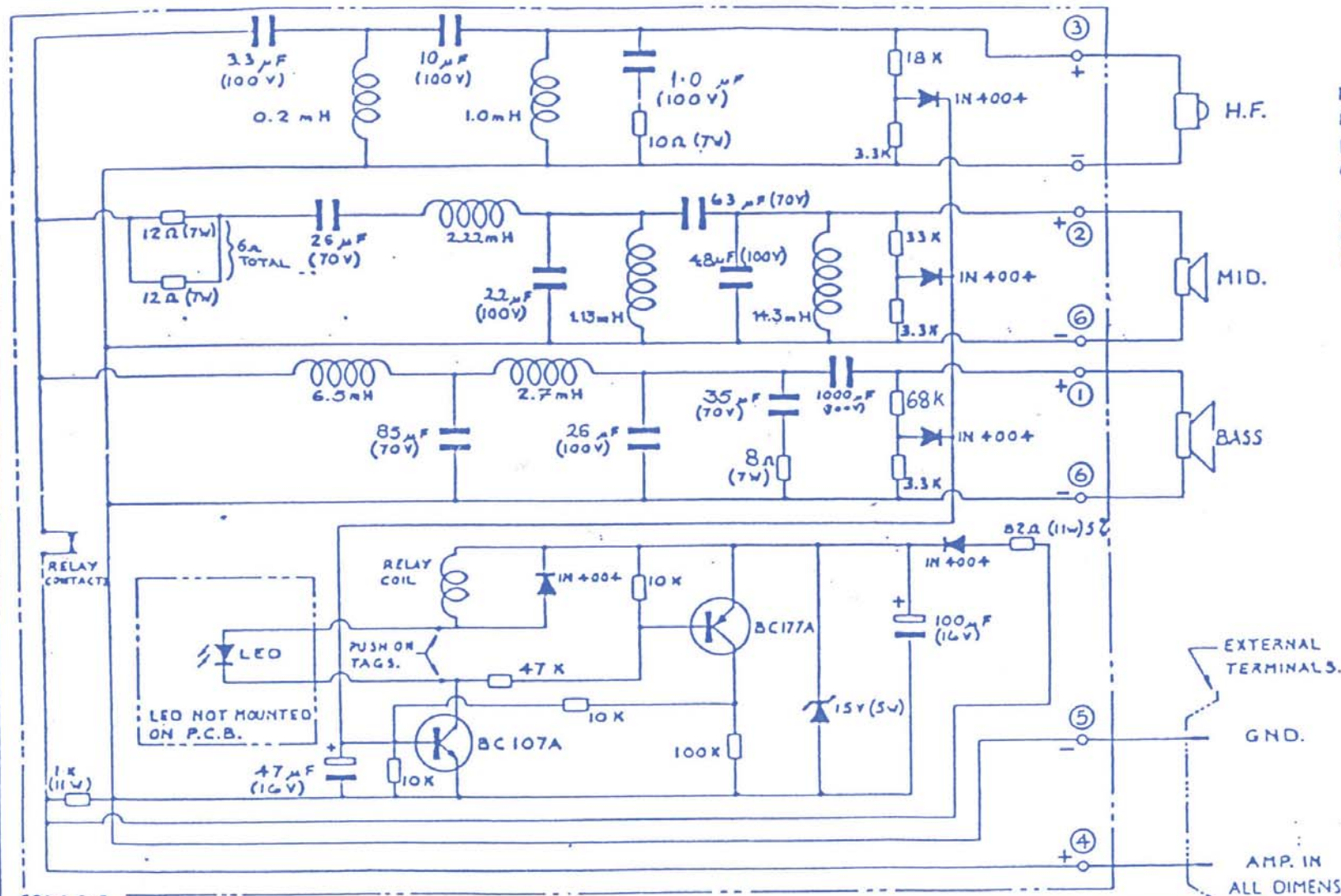


* Normally closed contacts of protection relay.

3rd ANGLE PROJECTION
DO NOT SCALE

NOTE.
ENCIRCLED NUMBERS
DENOTE 'MOLEX' PIN
CONNECTIONS.

CIRCUIT WITHIN
CHAIN-DOT OUTLINE IS
MOUNTED ON P.C.B.



COPYRIGHT

EXTERNAL
TERMINALS.

GND.

AMP. IN
ALL DIMENSIONS IN MILLIMETRES

NO	REVISIONS	DATE
1	BOL. NO. 801 TO BOL. JUMPS FOR WIRING ON P.C.B.	22/12/81

TITLE:-

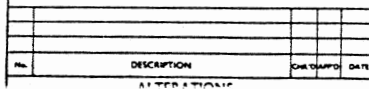
CIRCUIT DIAGRAM - MODEL 801

(APOC VERSION)

B & W LOUDSPEAKERS LTD. WORTHING, ENGLAND.

DRAWN	CHECKED	SCALE	DATE
J.C.R.			14-3-81

DRG. NO.



CONVERSION OF 801 WITH BATTERY OPERATED PROTECT TO APOC VERSION

The original 801 was fitted with three separate crossover modules, the bass filter, the midrange and treble filter and the protect module. To proceed with the conversion, the model must have the head assembly removed, along with the top cover and foam and also the bass unit and all the internal wool.

The three crossover modules may now be removed from the cabinet, and all the fixing holes should be sealed airtight by boring them out and gluing in appropriate size dowels.

New fixing holes for the APOC type board must now be drilled and counterbored in the top rear of the cabinet, in accordance with the drawing supplied.

A further counterbored hole is required in the lower front of the cabinet to take the APOC LED. This is also shown in the drawing.

The LED is glued in position ensuring an airtight seal and then covered with the B&W badge. The green wire from the LED should be connected to the crossover terminal marked with a green dot. When the new crossover and harness are in position the cabinet should be refilled with wool, distributing it evenly throughout the volume of the box but leaving a slight hollow to accommodate the bass unit, which may now be refitted.

.../...

The phase of the bass unit can be checked using a $1\frac{1}{2}$ volt torch battery. Applying the positive terminal of the battery to the positive terminal of the loudspeaker should produce an outward motion of the bass unit cone.

Correct APOC operation can be checked using a sinewave oscillator, an amplifier and an A.C. voltmeter. The protect should trip at the following voltages into the system:

- | | | |
|----|-----------------------------|--------------------------|
| 1) | Bass (measured at 100Hz) | 32 volts ± 2 volts |
| 2) | Midrange (measured at 1kHz) | 42 volts ± 3 volts |
| 3) | H.F. (measured at 10kHz) | 15 volts ± 1.5 volts |

The above voltages should not be exceeded if the protect does not trip, or the drive units will be damaged. If the circuit does not operate, recheck the wiring, in particular the polarity of the LED.

Stephen Roe
B&W Loudspeakers
WORTHING
ENGLAND

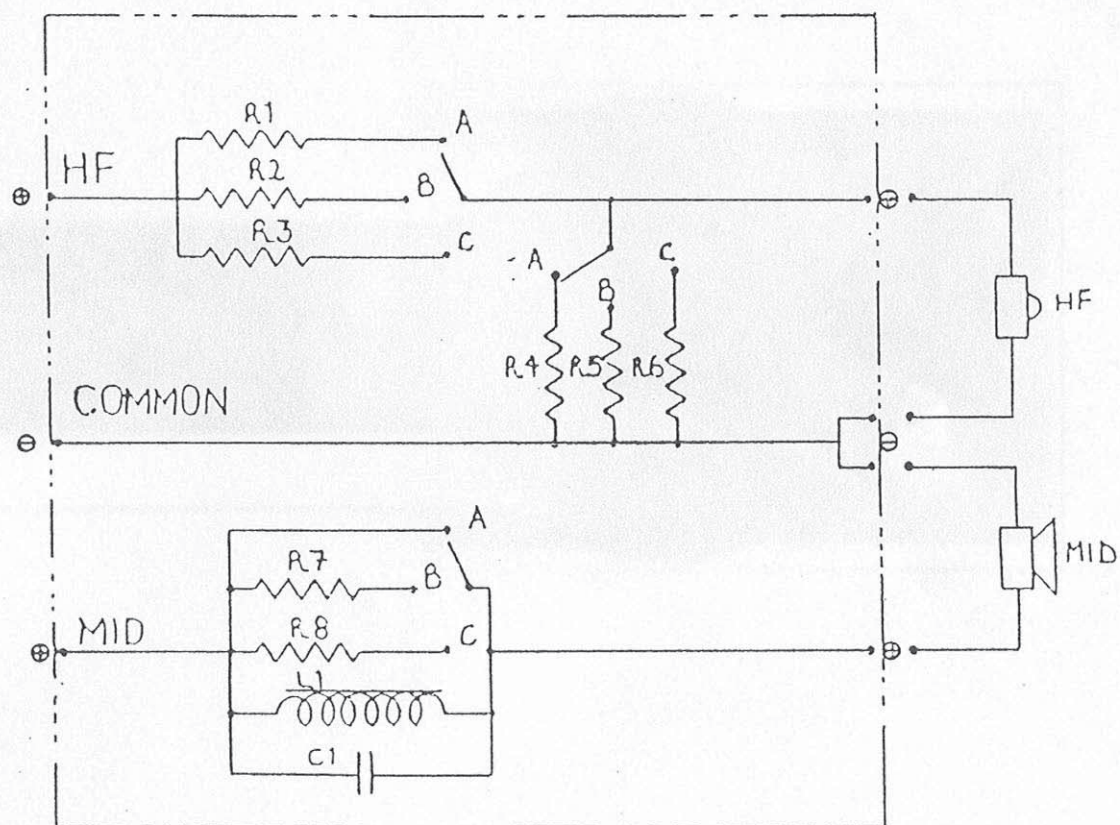
13th December 1985

3rd ANGLE PROJECTION
DO NOT SCALE

A, B & C DENOTE SWITCH
POSITIONS

COMPONENTS INSIDE CHAIN
DOT OUTLINE ARE MOUNTED
ON THE PCB.

RESISTORS		INDUCTOR
R1	2.2 Ω	L1 0.8 mH
R2	1.0 Ω	CAPACITOR
R3	3.3 Ω	C1 20 μ F
R4	10 Ω	
R5	22 Ω	
R6	6.8 Ω	
R7	2.2 Ω	
R8	2.2 Ω	



COPYRIGHT

ALL DIMENSIONS IN MILLIMETRES

Nº	REVISIONS	DATE

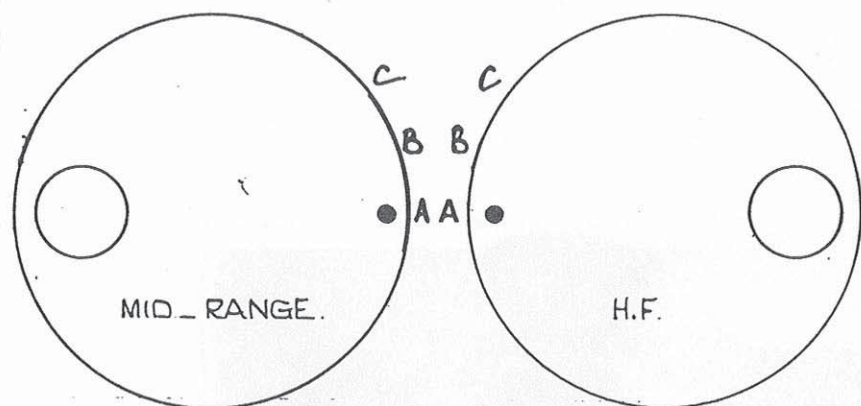
TITLE:- 801 HEAD ATTENUATOR

B & W LOUDSPEAKERS LTD. WORTHING, ENGLAND.

DRAWN C.G.H.	CHECKED	SCALE ----	DATE 15-2-82
-----------------	---------	---------------	-----------------

DRG. Nº A 927

3rd ANGLE PROJECTION
DO NOT SCALE



A.... FLAT..

B... 1 dB DIP

C.....1.5 - 2 dB DIP.

A.... FLAT.

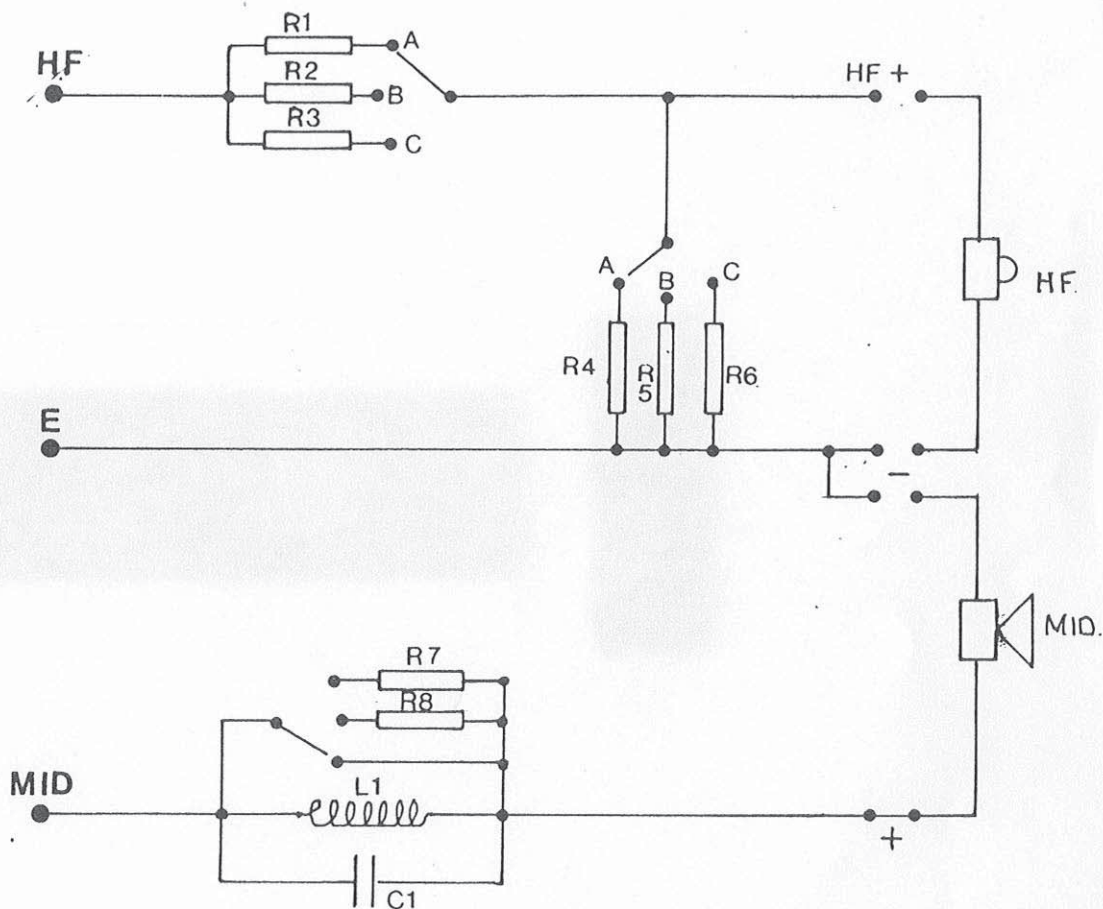
B... 2 dB LIFT.

C.... 2 dB CUT.

COMPONENTS

R1 2.2 Ω	L1 0.3 mH
R2 1.0 "	C1 20 mfd.
R3 3.3 "	
R4 10 "	
R5 22 "	
R6 68 "	
R7 15 "	
R8 3.3 "	

ALL RESISTORS 4W.



COPYRIGHT 1982

ALL DIMENSIONS IN MILLIMETRES

Nº	REVISIONS	DATE

TITLE:- 801 ATTENUATOR

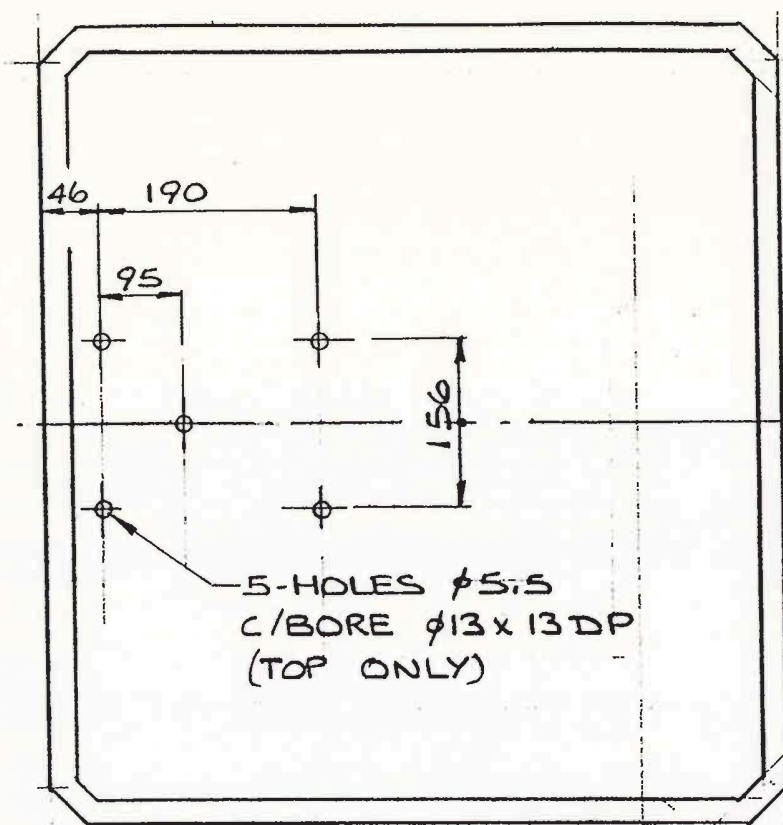
ORIGINAL PRODUCTION VERSION.

B & W LOUDSPEAKERS LTD. WORTHING, ENGLAND.

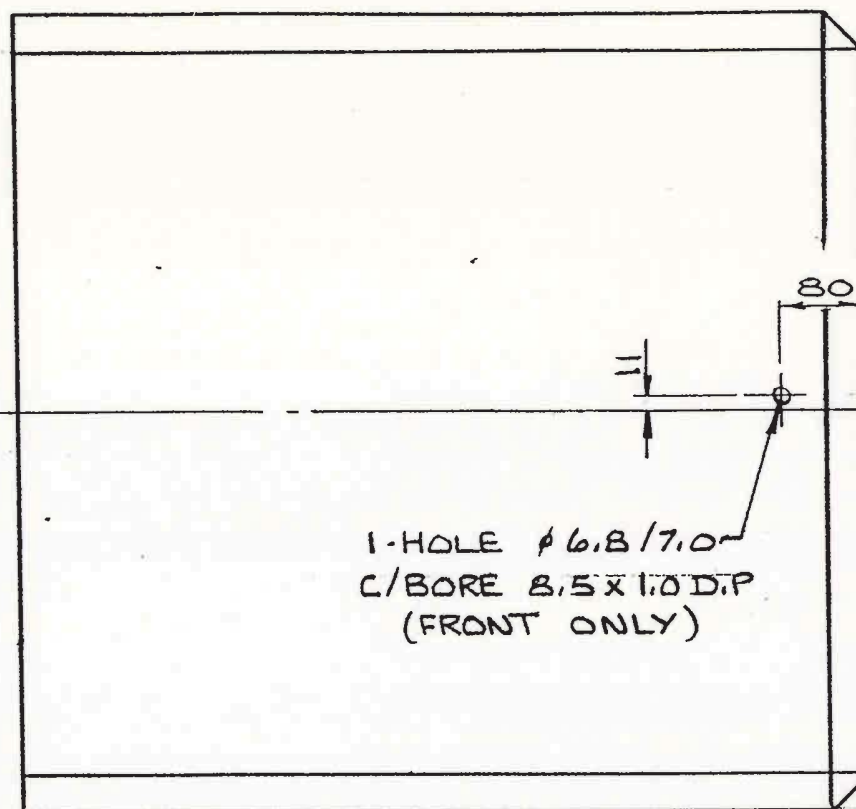
DRAWN	CHECKED	SCALE	DATE
Gpnd JRG			3.12.82

DRG. Nº A960

3rd ANGLE PROJECTION
DO NOT SCALE



FRONT



COPYRIGHT

ALL DIMENSIONS IN MILLIMETRES

No.	REVISIONS	DATE

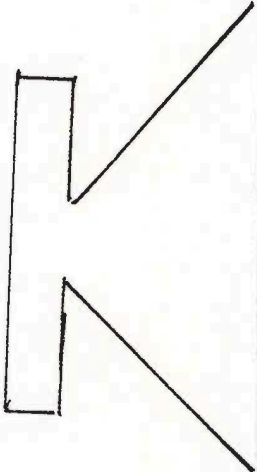
TITLE:- NEW CROSSOVER POSN
FOR 801

B & W LOUDSPEAKERS LTD. WORTHING, ENGLAND.

DRAWN	CHECKED	SCALE NTS	DATE 10/12
-------	---------	--------------	---------------

DRG. No. A1185

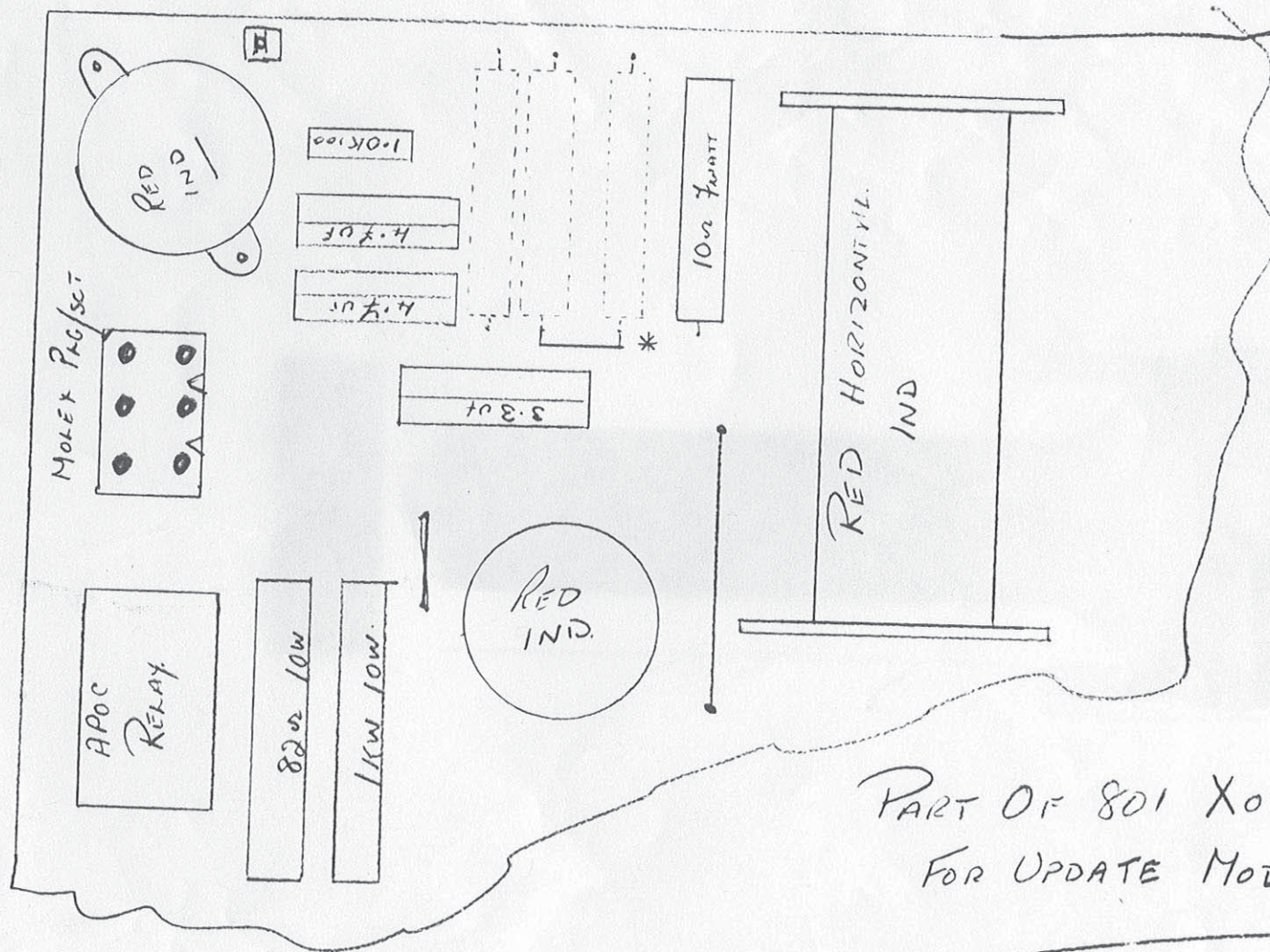
DISTRIBUTION OF WOOL IN 801

0.823 KG $1 \text{ lb. } 13 \text{ oz}$	0.681 KG $1 \text{ lb. } 8 \text{ oz}$	
0.409 KG $14\frac{1}{2} \text{ oz}$	0.454 KG 1 lb	

IN ADDITION 80 grammes IN HEAD MID/HF

TOTAL 2.447 KG
PER CABINET

3x RESISTORS IN DOTTED OUTLINE TO BE REMOVED
AND REPLACED BY WIRE LINK * BETWEEN THE
TWO RESISTORS SHOWN.



PART OF 801 XOVER
FOR UPDATE MOD (NEW TWEETER)

* mod. for changing from 801 to FS.

DEVELOPMENT CHANGES

801

1. Smaller mid-range crossover board introduced but no circuit changes from serial number 351.
2. Plug-in relay on crossover board changed to soldered in type from serial number 901.
3. Blocking capacitor fitted from serial number 1587.
4. Introduction of the fibre-crete head from serial number 4001.

The fibre-crete head can be used on bass enclosures before serial number 4001. There is a modification kit available for those wishing to adapt early bass enclosures to accept the fibre-crete head.

The changes are a metal mounting plate, a heavy duty bolt for head fixing and a new connector which are available on request.

-
5. Battery for old A.P.O.C. PP9 changed to Eveready 276 or Duracell M1603.

TXS TWEET & ENVIRONMENTAL FROM 8000