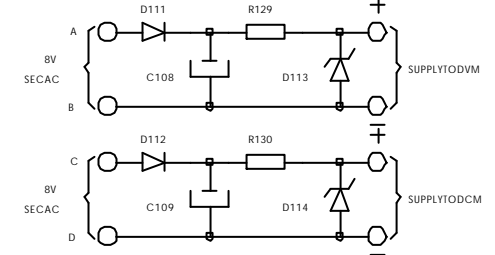


NOS.	VALUES	NOS.	VALUES	NOS.	VALUES
R101	220E1/2W	R214	47K	D109	1N4002/10KPF
R102	4K7	R215	10K	D110	4A03/1N4002
R103	390E1/2W	R216	100K	D111	1N4002
R104	180K	R217	3K3	D112	1N4002
R105	1K5CFR5%	R218	10K	D113	9.1VZ
R106	3K3	R219	4.70E	D114	9.1VZ
R107	470ECFR5%	R401		D115	LED(YELLOW)
R108	33K	R402		D201	1N4002
R109		R403		D202	
R110		R404	0.22E5W	D203	1N4002
R111				D204	1N4002
R112	100E			D205	6.2VFZ
R113	1K2	C101	220MF/35V	D206	1N4002
R114	10K	C102	1000MF/16V	D207	1N4002
R115	330EMFR	C103	10KPF	D208	6.2VFZ
R116		C104	100MF/16V	D209	1N4002
R117		C105	1MF/100V		
R118	1K51%MFR	C106	10KPF	B401	L14A03(x4)
R119		C107	0.22MF/250V		
R120	8K21W	C108	100MF/16V	T101	TIP31A
R121	33KMFR	C109	100MF/16V	T102	2N5551
R122	220EMFR	C110	220MF/16V	T201	2N5551
R123	470ECFR5%	C111	220MF/16V	T202	2N5551
R124	6K8MFR	C112	100KPF	T401	2N3773
R125		C201	470MF/35V		
R126	10K	C202	100KPF		
R127	4K7	C203	10MF/25V	IC101	LM336(2.5V)
R128	4K7	C204	10MF/25V	IC102A	LM1458
R129	100E1/4W	C401	3300MF/80V	IC102B	LM1458
R130	100E1/4W	C402	100MF/50V	IC201	7815
R201	4K7	C403	10KPF	IC202	LM1458
R202	1K8	C404			
R203	10K			RL1	12VRELAY
R204	33K			RL2	12VRELAY
R205	39K			RL3	THERMALRELAY
R206	10K	D101	1N4002		
R207	100K	D102	1N4002	F1	2ASLOWBLOW
R208	3K3	D103	6.2VFZ		
R209	10K	D104	1.2VFZ	RBC	33K
R210	4K7	D105	LED(RED)	RAC	1K5
R211	3K3	D106	1N4148	RBV	100K
R212	10K	D107	LED(GREEN)	RAV	100E
R213	100K	D108	1N4002		

NOTE:- ALL RESISTOR ARE 1/4 W OHMS UNLESS OTHERWISE SPECIFIED.
 PR101:- VOLTAGE ADJUST PRESET-220 OHMS CARBON
 PR102:- CURRENT ADJUST PRESET-100K
 PT101:- VOLTAGE ADJUST POT 10K (COARSE)
 PT102:- VOLTAGE ADJUST POT 1K (FINE)
 PT103:- CURRENT ADJUST POT 100K
 * THIS COMPONENTS ARE OUTSIDE PCB.



NOS.	DESCRIPTION	APPD.	CHK.	DATE	
A M E N D					
SONODYNE INTL. LTD., MUMBAI.				DATE-	03/05/02
SCHEMATIC CIRCUIT DIAGRAM OF MODEL PS2403 PRO.					
DRG. NO.:	DRN. BY	CHD. BY	APPD. BY	REV.	
SIL/16/0211	PRASANNA	D.D.	S.R. Shinde	0 0	

SCHEMATIC CIRCUIT DIAGRAM OF MODEL PS2403 PRO.

