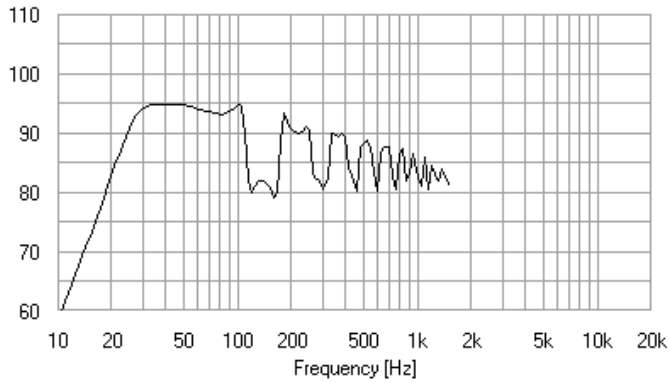
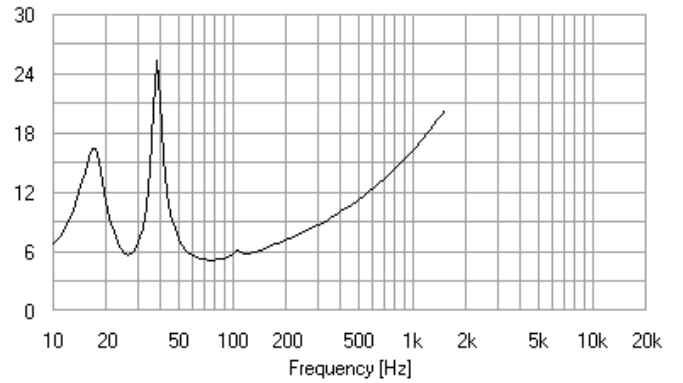


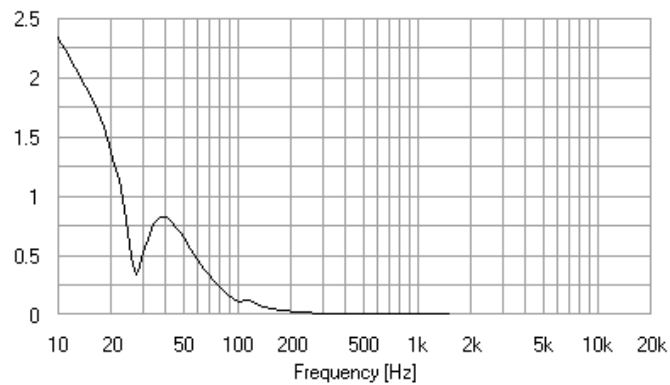
SPL [dB]



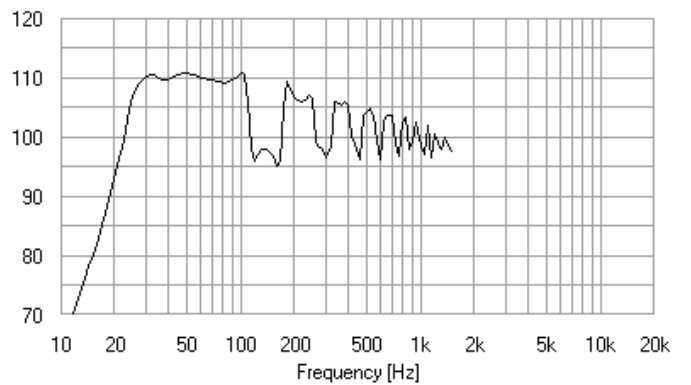
Zel in Ohms



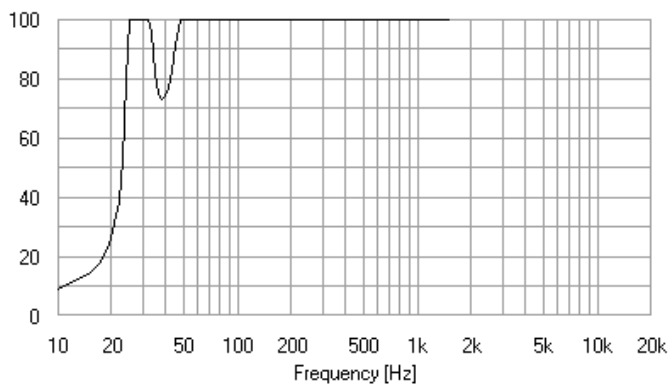
Cone amplitude mm



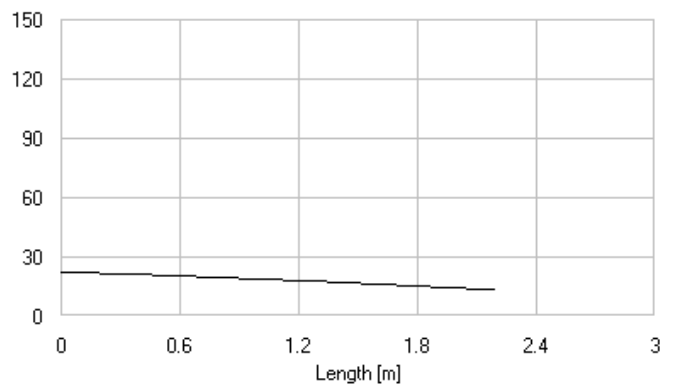
SPLmax in dB



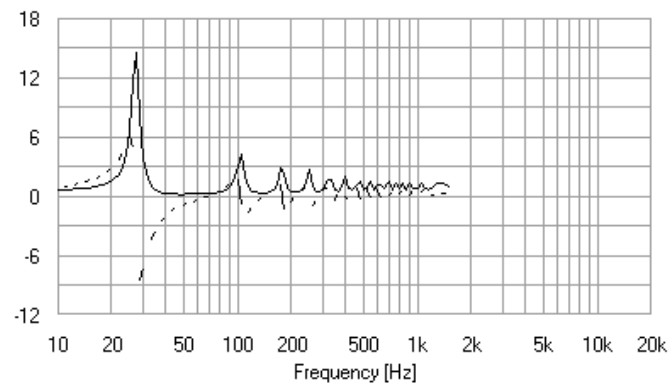
Pmax in W



Radius in cm



Acoustic impedance at throat



Driver:

Rdc = 3.2 Ohm
fs = 26 Hz
Qes = 0.4
Qms = 3.7
Vas = 125 l
Pmax = 100 W
Sd = 507 cm²
Z1k = 16.3 Ohm
Z10k = 60 Ohm
Xmax = +/-6.3 mm
Number of chassis = 1
Ue = 2.83 V

Crossover:

R1 = Ohm
C1 = uF
L1 = mH
R2 = Ohm
C2 = uF
L2 = mH
R3 = Ohm
C3 = uF
L3 = mH
R4 = Ohm
C4 = uF
L4 = mH

Horn:

Type = Rearloaded Horn
Contour = Parabolic
Position = Floor
Distance mic->cone = 1 m
h = 14 cm
b = 40 cm
l = 2.2 m
dl = 0 m
Ah = 1600 cm²
Vrc = 20 l
Vfc = 0 l
Betha1 = 150
Betha2 = 0

Misc:

Cms = 0.343 mm/N
Mms = 109.279 g
Rms = 4.825 kg/s
BxL = 11.951 N/A
Pe = 2.503 W
VHorn = 237.6 l
Vtot = 237.6 l