

NINTENDO AMPLIFIER

Now your playing with power
(Power Stage)

- R1,6,11 = 3 x 0.22 ohm 2W MPC74
- R2,5,7,9,12,14,16,18,20,25 = 10 x 10K 0.6W 0.1%
- R3,4,8,10,13,15,17,19 = 8 x 1k 0.6W 0.1%
- R21,24 = 2 x 2K2 0.6W 0.1%
- R22,23 = 2 x 200 0.25W 0.1%
- R26 = 1 x 10 5Watt
- R27 = 1 x 2.7 ohm 2W
- R28 = 1 x 470 ohm 0.6W 0.1%

- C1,2,15,16,23,24,25,26,29,33,37 = 11 x 100n 100V WIMA RM5 MKS2
- C3,4,9,10,17,18,31,35 = 8 x 10uF 50V rad RM2.5
- C7,C8,13,14,21,22,28,32 = 8 x 100uF 50V rad RM3.75 8x12mm
- C5,6,11,12,19,20 = 6 x 470uF 50V rad RM5 10x30mm
- C27 = 1 x 47p WIMA 1000V FKP2 RM5
- C30,34 = 2 x 1uF WIMA 50V MKS2 RM5
- C36 = 1 x 4.7uF WIMA 50V MKS2 RM5
- C38 = 1 x 680p WIMA 1000V FKP2 RM5
- C39 = 1 x 330p WIMA 100V FKP2 RM5

- U1,2,3 = 6 x LM3886TF
- U4 = LME49710
- U5 = LM317
- U6 = LM337

- D1,2,3 = 3 x Zener 16V 0.5W
- L1 = 1 x 0.7uH 18W 10mm Dia 1mm CuM
- Socket = 1 x 8 pin DIP8

* With 10K gain is 10x to get 20x gain use 20K resistor
Place parts when needed

Use two of this and balanced input board for 6 x LM3886 balanced amp

(Balanced Preamp)

- R30,32 = 2 x 100K 0.6W 0.1%
- R29,33 = 2 x 100 0.6W 0.1%
- R31 = 1 x 2M2 0.6W 1%
- R34,35,36 = 3 x 1K 0.6W 0.1%
- R37,38 = 2 x 200 0.25W 0.1%
- R39,40 = 2 x 2K2 0.6W 0.1%

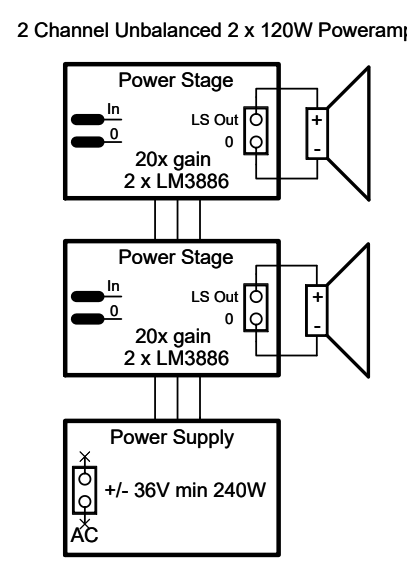
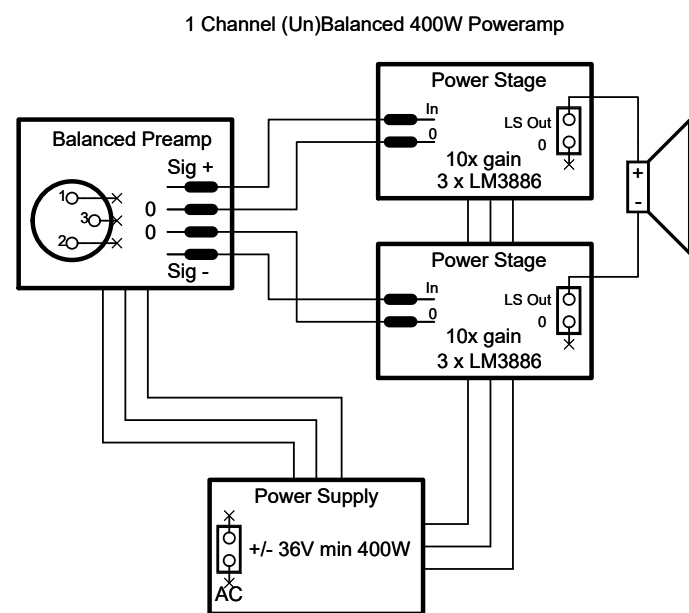
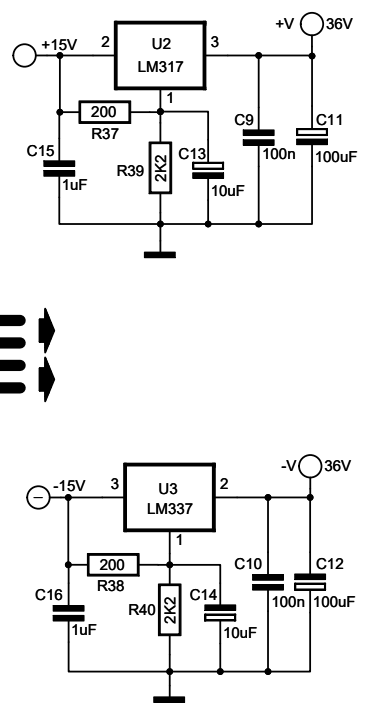
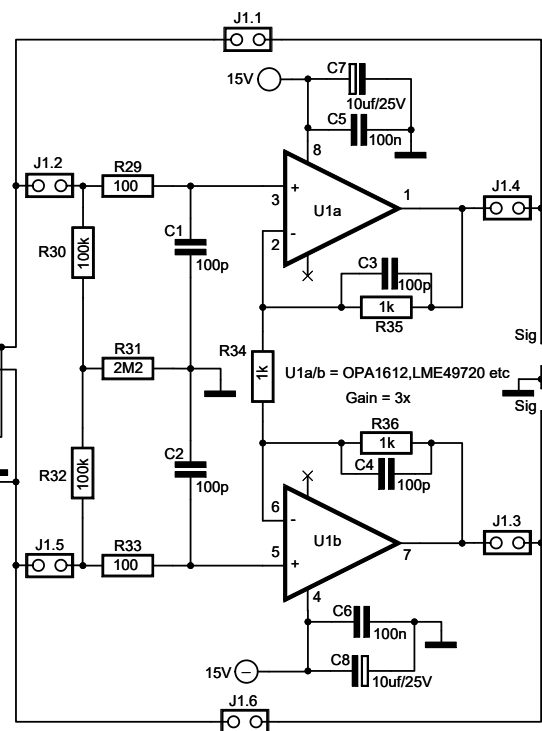
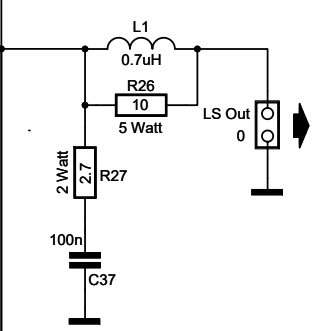
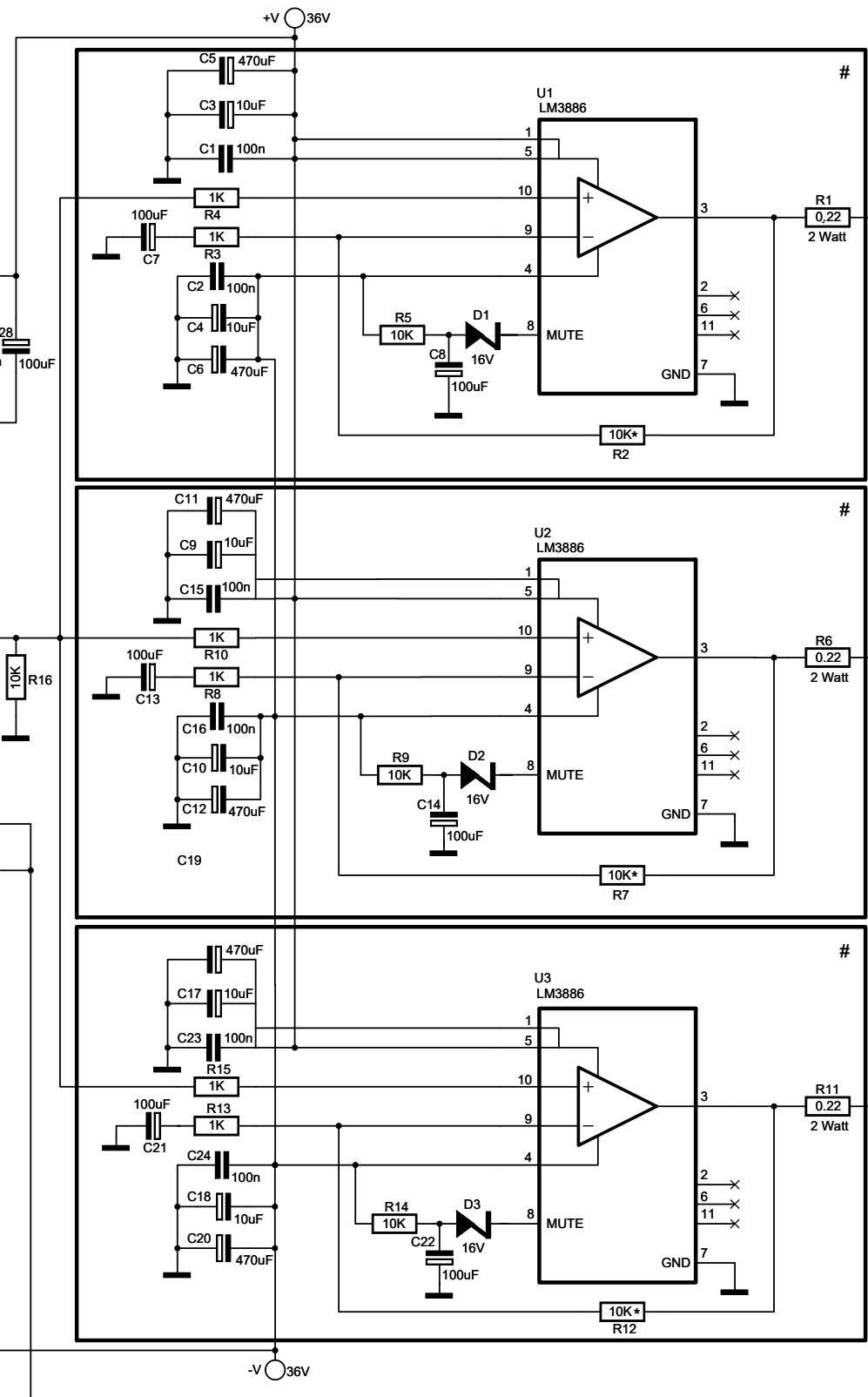
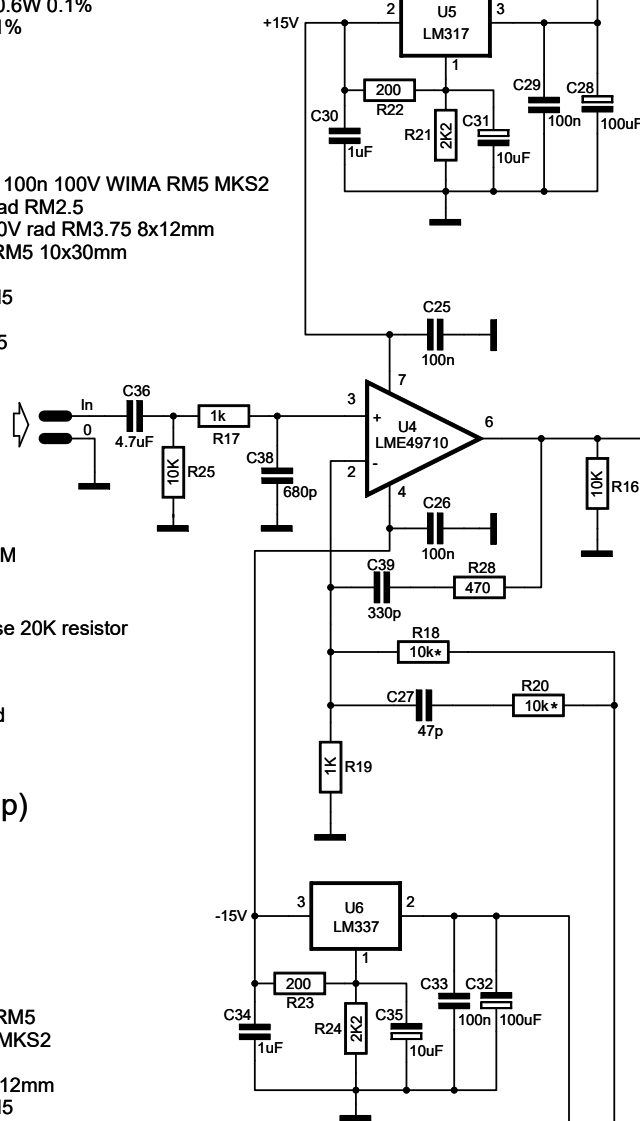
- C1,2,3,4 = 4 x 100p WIMA 100V FKP2 RM5
- C5,6,9,10 = 4 x 100n 100V WIMA RM5 MKS2
- C7,8,13,14 = 4 x 10uF 50V rad RM2.5
- C11,12 = 2 x 100uF 50V rad RM3.75 8x12mm
- C15,16 = 2 x 1uF WIMA 50V MKS2 RM5

- U1 = LME49720, OPA1612
- U2 = LM317
- U3 = LM337

Socket = 1 x 8 pin DIP8

H1 = Neutrik NCJ6FA-H

J1 = 6 polig Dipswitch RM7.5



Use onboard opampbuffer
J1.2, J1.3, J1.5 and J1.4 set ON
J1.1 and J1.6 set OFF

Bypass onboard opampbuffer
J1.1 and J1.6 set ON
J1.2, J1.3, J1.5 and J1.4 set OFF