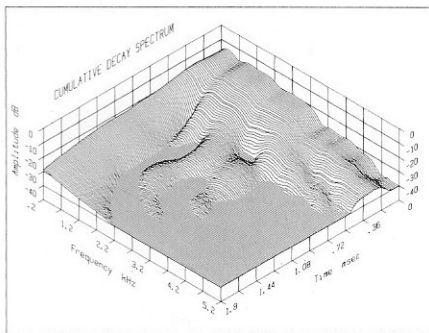
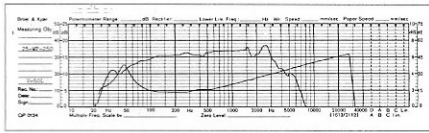
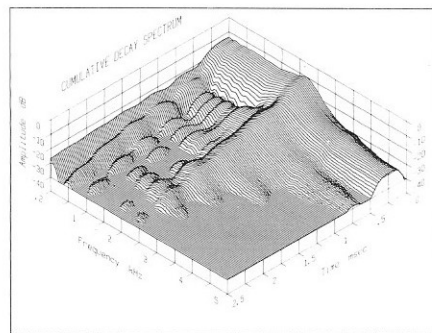
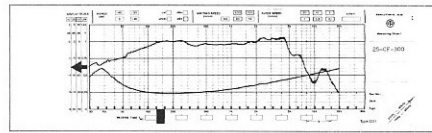
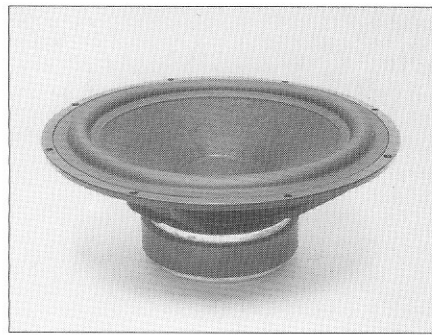


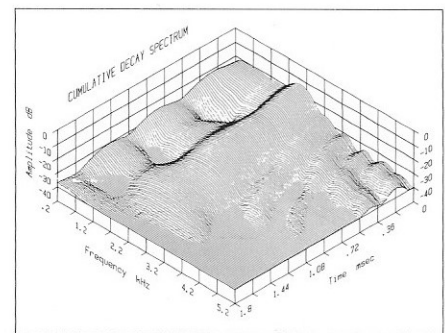
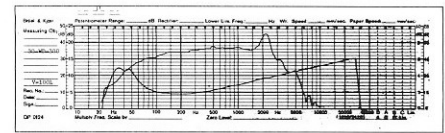
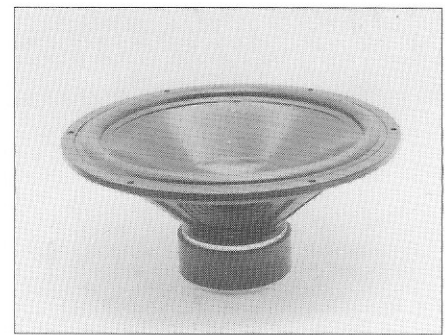
## 25-WP-250



## 25-CF-300



## 30-WD-300



### Mineral Filled Poly Cone

D	10	inch
Zn	8	Ω
fo	24-3000	Hz
Lp	90	dB
fs	24	Hz

Pn	150	Watt
Pm	240	Watt

Sd	346	cm <sup>2</sup>
Mms	42	g
Vd	211	cm <sup>3</sup>
Rms	1.71	kg/s

Cms	1.06x10 <sup>-3</sup>	m/N
Cas	1.27x10 <sup>-6</sup>	m <sup>5</sup> /N
Vas	178	dm <sup>3</sup>

Re	5.7	Ω
Le	2.2	mH
Dvc	40	mm
Hvc	14	mm
Hag	6.0	mm

Qms	3.70	-
Qes	0.30	-
Qts	0.28	-

Bxl	11.0	T.m
Vb	25-70	dm <sup>3</sup>

### Paper/Carbon Fibre Cone

D	10	inch
Zn	8	Ω
fo	24-1000	Hz
Lp	90	dB
fs	24	Hz

Pn	180	Watt
Pm	300	Watt

Sd	337	cm <sup>2</sup>
Mms	45	g
Vd	264	cm <sup>3</sup>
Rms	2.84	kg/s

Cms	1.17x10 <sup>-3</sup>	m/N
Cas	1.32x10 <sup>-6</sup>	m <sup>5</sup> /N
Vas	185	dm <sup>3</sup>

Re	5.5	Ω
Le	1.15	mH
Dvc	40	mm
Hvc	18	mm
Hag	8.0	mm

Qms	2.39	-
Qes	0.35	-
Qts	0.31	-

Bxl	10.3	T.m
Vb	50-100	dm <sup>3</sup>

### Coated Paper Cone

D	12	inch
Zn	8	Ω
fo	21-1000	Hz
Lp	93	dB
fs	21	Hz

Pn	180	Watt
Pm	300	Watt

Sd	513	cm <sup>2</sup>
Mms	53	g
Vd	313	cm <sup>3</sup>
Rms	3.04	kg/s

Cms	1.09x10 <sup>-3</sup>	m/N
Cas	2.86x10 <sup>-6</sup>	m <sup>5</sup> /N
Vas	400	dm <sup>3</sup>

Re	5.7	Ω
Le	2.1	mH
Dvc	40	mm
Hvc	14	mm
Hag	6.0	mm

Qms	2.30	-
Qes	0.25	-
Qts	0.23	-

Bxl	12.7	T.m
Vb	40-120	dm <sup>3</sup>

