

- R11 = 1 × 82 Ω
- R12 = 1 × 3k3
- R13 = 1 × 5k6
- R14 = 1 × 22 k
- R15 = 1 × 165 Ω 1%
- R16,R17 = 2 × 10Ω0 1%
- R18 = 1 × 2k2/1,5 W
- R19,R22 = 2 × 100 Ω 1%
- R20,R21 = 2 × 4k7/1,5 W
- R23 = 1 × 2k2
- R24 = 1 × draadbrug
- R25 = 1 × 3k32 1%
- R26,R34 = 2 × 8k2
- R27 = 1 × 12 k
- R28,R32,R35,R39 = 4 × 5k6
- R29,R38 = 2 × 1 Ω/1,5 W
- R30,R37 = 2 × 100 Ω
- R31,R36 = 2 × 3k9
- R33 = 1 × 6k8
- P1 = 1 × 100-Ω-meerslagen-instelpotmeter
- P2,P3 = 2 × 2k5-instelpotmeter

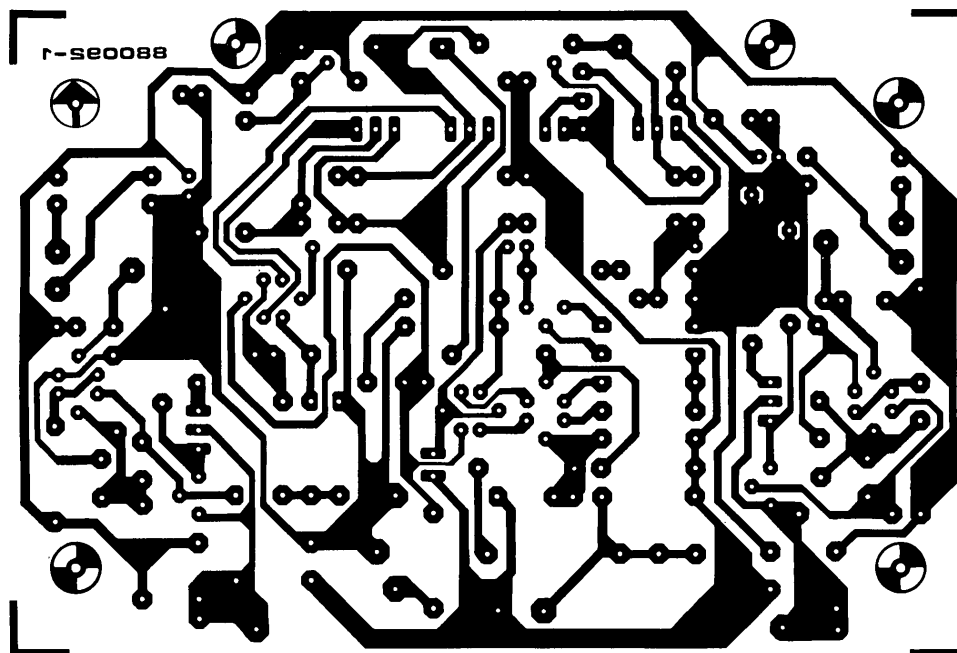
- Kondensatoren:
- C1 = 1 × 4μ7 MKT
 - C2 = 1 × 680 p Styroflex
 - C3 = 1 × 12 n
 - C4 = 1 × 100 n
 - C5,C7 = 2 × 47 μ/63 V
 - C6,C11,C17 = 3 × 10 μ/40 V
 - C8 = 1 × 2n7
 - C9 = 1 × 68 p/63 V Styroflex
 - C10,C15,C16,C21 = 4 × 680 n
 - C12,C18 = 2 × 1 μ/63 V
 - C13,C19 = 2 × 47 n
 - C14,C20 = 2 × 100 p

- Halfgeleiders:
- D1,D2 = 2 × 1N4148
 - D3,D4 = 2 × zenerdiode 18 V/0,4 W
 - T1/T2 = 1 × 2SK146V (let op V-achtervoegsel!)
 - T3,T4 = 2 × BC550C
 - T5 = 1 × BC639
 - T6,T7 = 2 × BC560C (evt. paren)
 - T8,T9 = 2 × BF470
 - T10,T11 = 2 × BF469 (evt. paren)
 - T12,T13,T14 = 3 × BC546B
 - T15 = 1 × BD139
 - T16,T17,T18 = 3 × BC556B
 - T19 = 1 × BD140

- Diversen:
- 1 print EPS 880092-1 (zie pag. 6)

Figuur 2. De spanningsversterker is op deze print ondergebracht.

2



(print-layout in spiegelbeeld afgedrukt)

